

Shelburne Free Press

SHELBURNE'S NEWSPAPER SINCE 1875

www.shelburnefreepress.ca



.75(Tax) Mailing Registration No. 40005412

Thursday, September 26, 2013

Volume 107, No. 23



PHOTOS BY ALEX SHER

Town councillor Walter Benotto, chair of Parent School Council Linda Cruikshank, principal of Glenbrook Elementary School Tom Thompson, Trees Canada representative and former forester Mike Clarke, and owner of Shelburne Home Hardware Building Centre Bill Gillam, with Glenbrook Elementary Grade 8 students and both Junior and Senior Kindergarten classes celebrating National Tree Day with a planting ceremony on the grounds of Glenbrook Elementary School on September 25.

Shelburne Home Hardware, Trees Canada and Glenbrook Elementary celebrate National Tree Day

BY ALEX SHER

Shelburne Home Hardware Building Centre and Trees Canada helped Glenbrook Elementary School celebrate National Tree Day with a planting ceremony held on Wednesday, September 25.

Town councillor, Walter Benotto, Chair of Parent School Council, Linda Cruikshank, Principle of Glenbrook Elementary School, Tom Thompson, Trees Canada Representative, Mike Clarke, and owner of Shelburne Home Hardware Building Centre, Bill Gillam were on hand with two very special groups of kids to celebrate this special occasion.

The first group of grade eight students to graduate from Glenbrook and the first Senior and Junior Kindergarten classes who are just beginning their educational careers gathered together to mark the happy occasion during National Forest Week where the Wednesday of that week is referred to as National Tree Day. Principal Tom Thompson, addressed his pupils.

"Important to remember is that we've had trees cut down on our property and it's very kind of Fines Home Hardware and Trees Canada to gracious-

ly donate two trees to us. We need to make sure to protect them to make sure they flourish and we thank Fines Home Hardware and Trees Canada as we'll be enjoying these trees for years to come," said Thompson.

Mike Clarke of Trees Canada addressed the children informing them that since 1992 over 19,000 trees have been planted on National Tree Day. Clarke announced this year marks the non-profit organization's 21st year Anniversary. The Silver Maple Trees planted will do very well on the school property and when Clarke asked the kids what trees are good for, he was not disappointed in their response being trees are good for the environment, help to produce oxygen, shade provide sound mufflers and are necessary for wildlife to thrive.

This year 36 Home Hardware locations will be participating in planting and maintenance initiatives across Canada. Bill Gillam, Dealer-Owner of Shelburne Home Hardware Building Centre provided a quote, "Shelburne Home Hardware Building Centre is committed to the community and it is important for us to extend

our commitment to restoring nature's beauty. National Tree Day is an important initiative that allows us to thank our customers for their loyal support while improving the

local environment."

For more information visit Trees Canada at www.trees-canada.ca or contact Bill Gillam at bill@finesh.com or 519-760-4646.



Kids at Glenbrook Elementary get a chance to complete the planting process spreading mulch on one of two trees that were donated in partnership between Trees Canada and Shelburne Home Hardware Building Centre in celebration of National Tree Day.

ROY'S SERVICE CENTRE

Did you know? We sell and professionally install every single make and model of winter tires!

Just South of Primrose on Hwy#10
SHELBURNE • 519-925-2847

Let us provide solutions for all your home & auto insurance needs. Drop in to **Crewson Insurance** or call **925-3145** ask for Grant

Grant Symons
Crewson Ins. Brokers

Orangeville Volkswagen

Visit us today!
(519) 941-3317 • OrangevilleVW.ca

Shelburne Free Press **PHOTO CONTEST**

Let's see Shelburne through your eyes and you could **WIN!**

Details on Page 3...

Medical Intuitive comes to Shelburne

This Saturday, September 28th, from 1:30 – 4 p.m. Medical Intuitive, Angelo Corriero will host a 2.5 hour session at the Shelburne Public Library (located at 201 Owen Sound Street in Shelburne). Tickets are \$22 each and should be purchased in advance online at www.angelocorriero.com/. Go to the "Events" page. Seating is limited. Angelo, is also a psychotherapist, and reconnection healing practitioner. His workshop will demonstrate how medical intuition works and how it can be of benefit to you. Angelo will also be doing 5-10 minute readings per person for the attendees. A medical intuitive may determine areas of concern from a holistic health practitioner's point of view and make recommendations. Tickets are also available at the Soaring Health Clinic or by phone at 519-925-1999.



Find us online at www.shelburnefreepress.ca

THE SHELBURNE FREE PRESS IS NOW ON FACEBOOK – The Shelburne Free Press has joined the digital era! Check us out online at www.shelburnefreepress.ca and 'Like' us on Facebook. Find additional stories that didn't make our pages and photo highlights from area events, as well as press releases and advisories from the Shelburne Police, Health Unit, local politicians and more!

GIANT TIGER
226 First Ave, Shelburne
519-925-6857
www.gianttiger.com

WE'LL BEAT ANY PRICE!
AD MATCH GUARANTEE!

LADIES ONESIES \$18 EACH
LADIES SNUGGIE SLIPPERS \$5 PAIR
FLEECE THROW BLANKETS 50" x 60" REG \$12.00 EACH \$10 EACH
SWEET SOURCE SUGAR 2 KG REG 2.47 LIMIT OF 4 \$1.44 EACH

FEATURED ITEMS

save on everything store

Taxpayers can look for further tax hikes starting in 2015

BY WES KELLER

County taxpayers can look forward to further tax hikes as early as 2015 to repay almost \$4-million it has taken from reserves for its share of erecting new buildings for the Wellington Dufferin Guelph Health Unit.

The Dufferin building is a 3-storey structure on Broadway in Orangeville. Its exterior is all but complete, and it's reported that its windows could be installed in October.

Dufferin taxpayers might be better off than their counterparts in the other two municipalities as, according to earlier reports, both Wellington and Guelph had to float immediate loans to pay their respective shares – and might have had to begin repayment almost immediately.

Dufferin's cash advances for its 21.4% share of the total cost had been calculated at \$4.7-million, of which it had already advanced approximately \$3.4-million.

Now county treasurer Alan Selby has reported that a provincial grant secured by the health unit has reduced the local share to \$3.955-million, or roughly \$4-million.

The total cost to all three partners had been set at \$22-million. The grant reduced that demand by about \$3.5-million, to a total of about \$18.5-million.

Apart from the health unit demands, County Council will be struggling with what might be unavoidable demands for budget hikes well beyond 5% when it begins deliberations in October.

That is the gist of the "heads up" bad news the treasurer delivered to the council last week. The main financial culprit would be the state of the county's infrastructure.

County Treasurer Alan Selby confirmed in an interview Wednesday his recommendation that the council increase its capital budget \$1-million annually for the next five years "as a starting point."

"It needs more than that (to bring the infrastructure up to where it should be.) But we have to weigh the needs against the affordability for the taxpayer."

Shelburne Mayor Ed Crewson in a brief phone interview said the county needs to have capital plans in place to take advantage of the provincial infrastructure grants.

Although it wasn't mentioned, the provincial demand for amortization accounting would reveal the current state of the infrastructure. This accounting is separate from the regular county budget.

In the forthcoming budget deliberations, the council will be looking at the Health Care request for \$2-million over four years, or \$500,000 a year for five years, as well as the capital demand for an added \$1-million – a total of \$1.5-million.

Mr. Selby related the total to this year's operating and capital budget total of about \$30-million. The \$1.5-million would represent 5% of that budget, which translates into a 5% hike for the taxpayer. If viewed from the perspective of the separate capital budget, it's

more like a 20% rise in capital tax, as the capital budget had been stabilized at \$4.5-million in the county's 3-year plan.

The 5% covers only the capital portion of the overall budget. Operating expenses are expected to rise, not only by the rate of inflation but also by increases in a variety of costs.

He used fuel as an example. "Anyone who drives a car knows you could fill up at the pump for \$1.10 a litre three years ago. Now it's at \$1.30.

That's about a 20% increase in three years," he said.

Even with the million-a-year increase plan, Mr. Selby said the infrastructure would not be "up to where it should be" in five years.

Specific figures will be forthcoming at the council's October meeting. He said his purpose in relating the capital needs was only to serve a warning of what the councilors can expect to be facing in their deliberations.

Shelburne welcomes new store: Burlap and Lace



PHOTO BY ALEX SHER

Shelburne welcomes business partners and owners of Burlap & Lace, Jamie-Lee Higgins and Jennifer Lumsden at their new locations at 115 Owen Sound St.

BY ALEX SHER

Self-proclaimed, 'Mom-Preneurs', business women, Jamie-Lee Higginson and Jennifer Lumsden are designing partners extraordinaire. Located at 115 Owen Sound St, their new store, Burlap & Lace will offer Shelburne several new concepts in just what a retail store can offer, and held their Grand Opening on Friday, September 20th.

Both Higginson and Lumsden are designers and just about everything in their store is an original. The Shelburne location will be a 'retail outlet' store, as the dynamic duo already have a warehouse filled

to the brim with wholesale inventory. Yes, these young moms and business women, design, run a separate wholesale business, design unique wedding crafts, teach instructional classes on how to make wooden items look primitive, and a whole lot more.

"We have a lot of exclusive, handcrafted, unique, one of a kinds," explained Higginson. "We called the store Burlap & Lace because Burlap represents all the rustic related items while Lace will represent the Victorian items."

Having once been nominated by the Dufferin Chamber of Commerce Business Woman

of the Year Award, Higginson proudly comments, "I didn't win but it's still quite an honour to be nominated!"

Both 'Mom-Preneurs' are local girls as Higginson is from Shelburne while Lumsden is from the close by community of Maxwell, and as a result their faces will be a welcome and familiar site to many shoppers.

When they began their business, neither Higginson nor Lumsden knew how successful they would become. When they have a warehouse sale at their house, people are lined up bright and early. Fortunately for we Shelburnites, we can

see first-hand what all the fuss is about by just visiting their store.

In keeping with the expression, 'diamonds in the rough', Burlap & Lace use reclaimed barn board, salvaged windows, doors, rescued banisters, vintage headboards and as a matter of fact, few things are what they appear to be as they are disguised as the most unique and often cutest craft items and stenciled signage you may have ever seen.

Higginson commented, "We can make something out of anything and we usually do."

Burlap & Lace will be open Thursdays and Fridays from 10 a.m. until 5 p.m. and Saturdays from 10 a.m. until 3 p.m. For more information on these unique, antique, vintage, home and giftware items, contact Burlap & Lace at 705-888-7656, email infor@primpick-ins.ca, or visit www.facebook.com/burlapandlacebyprimpickens.

Welcome to Shelburne Ladies!

Vendors

The Tottenham United Church Women are hosting their Annual Snowflake Craft & Bake Sale from 9 a.m. to 1 p.m. on Saturday, November 2. Crafters, if you are interested in renting a table for \$20 each contact Heather at 905-936-5307.

More highlights from the 146th Annual Shelburne Fall Fair



PHOTOS BY WES KELLER

MOTORING AS IT WAS – Robert Honiblow of Orangeville proudly stands by his 1930 Model A Ford coupe that has a storied "rumble seat" in mint condition. He displayed the vehicle at the Shelburne Fall Fair such that the bottom of the engine compartment could be viewed in a mirror beneath. He said the cab of the vehicle is the original steel but most of the rest of the car, such as fenders and the like, have been restored. This vehicle, he indicated, is like a member of the family. The Honiblow family also entered a mint-appearing 1955 Chevrolet Belair.

Farm Buildings, Homes, Cottages, Repaired, Remodeled, Restored, Jacked Up, Dismantled, Built.

Also Roofing, Siding, Doors, Windows, Cement Work, Foundations, Peers, Framework, Decks, Docks, Floors, Fencing Posts, Beams, Eavestrouthing, etc.

Repaired, Replace or Installed
Brian McCurdy • 519-986-1781

SHELBURNE FARMER'S MARKET
EVERY THURSDAY FROM 3PM TO 7PM
Located at Besley Country Market
716 Victoria Street, Shelburne

- Fresh meats • Vegetables • Breads
- Baked Goods & more...

New this week... Fresh Local Lamb & Pork!
Free children's activities all afternoon!
Come & meet your local farmers!

DIAMOND AUTO GLASS AND ACCESSORIES INCORPORATED
729 Industrial Road, Shelburne, ON L0N 1S4

WHY DO WE PAY INSURANCE PREMIUMS?

We all do it! We pay for comprehensive insurance coverage on our vehicles every time it comes up for renewal but when we need to use our coverage we are afraid to do so because we are afraid our premiums will go up. It's sort of like buying a barbecue every single spring and never cooking a steak all summer. We pay for insurance for a reason. If you have a broken windshield and you have comprehensive insurance on your vehicle than using it is fairly logical. You save money in almost all instances, and provided you are not abusing your policy using your insurance when paying for a windshield won't affect your premiums. You can ask your broker if there will be any negative ramifications from doing so and if you haven't had any recent claims they will tell you there won't be 90% of the time. At Diamond Auto Glass we work with all Insurance companies and include a lifetime warranty on all our installations, as well as a free interior and exterior car clean with every insurance claim processed. Give us a call at 519-925-8611 and we will guide you through the process of benefiting from the policy you are paying for anyway.

519.925.8611 • info@diamondautoglass.ca

NOTICE

Hunting in the Dufferin County Forest

All users of the Dufferin County Forest are hereby advised that Oct. 1-Nov. 3, Nov. 9-Dec. 1 and Dec. 7-31 are the archery seasons for deer in 2013. During this time there will be a number of hunters using the Dufferin County Forest properties. Please use caution in the forest and wear bright-coloured clothing. Suspected violations of the Fish & Wildlife Conservation Act should be reported to the Ministry of Natural Resources at 877-847-7667 (877-TIPS-MNR). Other inquiries should be directed to the County Forest Manager at 705-435-1881.

Corporation of the County of Dufferin

TRILLIUM FORD LINCOLN
www.trilliumford.com

ALLISTON
4589 INDUSTRIAL PARKWAY
866-670-6111

Two Locations

SHELBURNE
725 INDUSTRIAL RD. at Hwy 124
866-953-7935

Twice the Selection

<p>2013 Focus Hatch SE</p> <p>Auto, A/C, pwr pkg., SYNC hands free</p> <p>from \$141 at 0% bi weekly*</p>	<p>2013 Escape SE FWD</p> <p>Auto, ecoboost, SYNC hands free, heated seats, pwr pkg.</p> <p>from \$189 bi weekly*</p> <p>PLUS COSTCO MEMBERS RECEIVE AN ADDITIONAL \$1000!</p>	<p>2013 F150 4x4 Crew XLT</p> <p>Auto, V8, pwr pkg., SYNC hands free, alloy wheels, cruise/tilt</p> <p>from \$241 bi weekly*</p> <p>PLUS COSTCO MEMBERS RECEIVE AN ADDITIONAL \$1000!</p>
---	--	---

*plus HST and licensing. OAC with Ford Credit bi-weekly over 72 mths at a rate of 0%/2.49%/4.49% for Focus/Escape/F150 with \$0 down. Cost to borrow \$0/\$2383.29/\$5268.45 for Focus/Escape/F150 and subject to availability. Prices may change without notice and are accurate on the date of publication. All incentives assigned to the Dealer. Must be a COSTCO member prior to September 1, 2013 to be eligible. See Trillium Ford Lincoln Ltd for details.

ENDS SEPT 30th

EMPLOYEE PRICING

COSTCO WHOLESALE
ELIGIBLE COSTCO MEMBERS RECEIVE AN ADDITIONAL **\$1,000**

Highlights from the 146th Annual Shelburne Fall Fair



Meaghen shows her horse at the 14 and under judging

Horse team competition



Photos by Brian Lockhart

Free clinic for chronic pain sufferers

BY ALEX SHER

Funded by the Ministry of Health and Long Term Care, the Self Management initiative supports the training of Peer Leaders resulting in a 6 week program offered free of charge to those who wish to self manage their chronic pain situation.

"The programs come from the University of Stanford. They are non-medical, non-clinical and work with a support system teaching people how to set realistic goals while coping with a chronic pain situation," said Kathrine MacDonald, Co-Lead for the Self Management Program.

Participant, Margaret Thompson is a Cancer survivor and is unfortunately faced with chronic pain. Thompson has attended other clinics and finds them very helpful providing coping skills especially in her situation. "I'll do anything

to manage pain. I'm a cancer survivor and I now suffer Spinal Stenosis. It gets frustrating when pain gets overwhelming," said Thompson. This feisty and courageous woman will not be deterred from taking charge of her life and has this advice to offer anyone suffering with chronic pain, "Get off your butt and come to the sessions! Your health is your problem! You should do everything and anything that will help yourself to live the way you want to!"

In addition to having a support system, the sessions offer many coping skills to help deal with frustration, fatigue, isolation, poor sleep, medication concerns, appropriate exercise, surrounding Chronic neck pain, Fibromyalgia, Crohn's Disease, Irritable Bowel Syndrome, including the severe pain experienced with Multiple Sclerosis.

The sessions run every Tuesday from 1pm to 3:30pm at the Mel Lloyd Centre, is free to attend and to register call 519-925-2140 ext. 5230, or toll

free 1-855-269-8401, email mteeter@dufferincounty.ca or cdsm@williamoslerhs.ca and visit the website at www.cw-selfmanagement.ca



PHOTOS BY ALEX SHER

(L to R back row) – Kathrine MacDonald, Co-Lead for Self Management Program and Katrina Selby, Volunteer Peer Leader. (L to R front row) Margaret Baldwin, Elaine Healy, Joan Nutbrown, Bill Healy, and Margaret Thompson attend free program held at the Mel Lloyd Centre focusing on Self Management for Chronic Pain sufferers.



The Hit Disturbers play



Six year-old Daisy and four year-old Astrid feed chickens at the petting zoo.



Chloe Eggers and her dog Shelly at the dog show.



MacIver appears at ERT: county seeks wind farm halt

BY WES KELLER

Amaranth Mayor Don MacIver, speaking on behalf of his township council before a large gallery to the Environmental Review Tribunal (ERT) at Grace Tipling Hall Tuesday evening, made a strong health-related plea for Dufferin Wind Power's proposed 230kv transmission line to be buried throughout the distance across the township.

His wish list consisted essentially of only two items: that the line be buried in the interests of human, animal and environmental health the same extent as to Shelburne "and the industries in southern Amaranth;" and that there be an immediate baseline evaluation (of health effects) with annual monitoring "for 40 years beyond the project termination."

In a recent interview, the mayor said he was surprised and disappointed that he would be alone among the municipalities speaking for a buried power line at the ERT. Shelburne council is known to be opposed to the power line traversing the town, even though it is to be buried.

In the meantime, county council, on a motion by Shel-

burne Mayor Ed Crewson and Amaranth Deputy Mayor Walter Kolodziechuk, is asking for termination of the Dufferin Wind Farm entirely, with compensation of "all investors for their investment to date."

The county motion notes that the province had terminated two gas-fired generators at a cost "in excess of \$500-million," is exporting electricity at a loss, and, it says, "most wind energy in Ontario is surplus to base needs."

In his recent interview, Mayor MacIver said the information he'd received from experts in electricity and effects of electromagnetic fields (EMF) was "scary."

Some of that information may have formed a basis for his statistical outline of EMF

effects Tuesday.

His information on adverse effects on humans included greater incidences of leukemia, cancer, Alzheimer's and dementia on persons exposed to EMFs. On milk production, he said the EMFs had decreased milk production by 5.0% and reduced milk fat by 16.4% among Holstein cows.

He cited birth and breeding problems among pets. "There is sufficient evidence to invoke the Precautionary Principle to ensure that no harm should come to any individual or animal living or travelling near high voltage power lines."

The mayor attributed some of his information to studies over the past 30 years including a UK one that found greater numbers of cardiovascular

illnesses as well as lung cancer and aggravated asthma among 2.7 million people living within 400 metres of overhead

high voltage lines.

Mayor MacIver was one of four "presenters" at an evening meeting of the ERT. Apparent-

ly, the evening meeting, which commenced at 6:30, didn't afford time for cross-examination.



DENTURE SPECIALIST
DWIGHT CLAXTON DD, RDT
EAT • LAUGH • SMILE

295 BROADWAY ORANGEVILLE

519-941-3893

FREE CONSULTATION
NO REFERRALS NECESSARY



RBC Wealth Management®

Wills and Estate Planning Presentation

Your Shelburne Branch staff invites you to an informative and entertaining evening with Nancy M. Hoffman, PFP, our branch Investment, Tax & Estate specialist. At this client appreciation event, you will receive important information on the following:

- Significant information on content of wills and Provincial legislation that applies
- Validity of wills & trusts
- Advantages & disadvantages of saving probate fees
- Strategies to minimize estate taxes

Shelburne Public Library
130 Owen Sound St., Shelburne, ON
Thursday, September 26th, 2013
7:00 to 9:00 pm

Please call Traci Sinclair @ 519-925-2800 to reserve your place.

This event promises to be extremely valuable as we work towards your Estate vision for the future. Bring a guest to share this valuable information.

Best Regards,

Royal Bank Financial Group
Shelburne

Shelburne Free Press

PHOTO CONTEST

We want to see Shelburne through your eyes and you could WIN!

'God's country...Shelburne sunsets'
LISA CZEBAN

'Bird House'
EDDY MARIOTTI

One lucky reader will WIN a day of driving luxury with Exotic Car Tours.

TO ENTER: Send your best photos to wendy@simcoeyorkprinting.com between September 5th and 26th, 2013. Include your name, telephone number and a suggested photo caption. Must be 18 years of age and have a valid driver's licence to enter.

From September 5th - 26th, three photos will be chosen every week to run in the Shelburne Free Press. In our October 3rd issue all 12 photos will be published and YOU get to vote for your favourite! Winners will be selected and prizes awarded on October 23rd, 2013.

Shelburne Free Press

Shelburne's Newspaper Since 1975

143 Main Street, Shelburne, ON L0N 1S0
 519-925-2832 Fax: 519-925-5500
 Email: email@shelburnefreepress.ca



PUBLISHER: Karin Rossi
 EDITOR: Wendy Soloduik
 CREATIVE DIRECTOR: Sarah Didycz
 PRODUCTION: John Menoudakis
 SENIOR REPORTER: Wes Keller
 SPORTS REPORTER: Brian Lockhart
 SALES: Kathey Stanton, Julie Lockyer, Debbie Freeman, Cathy Walls
 OFFICE MANAGER: Debbie Freeman

APRIL 18, 2013
 Subscription Rate: \$35.00 + \$1.75 (GST)
 per year (36.75) payable in advance

Second Class Mailing Registration Number 0153
 Member of: Ontario Community Newspaper Association
 Canadian Community Newspaper Association
 Ontario Press Council, 80 Gould Street, Toronto
 MSB 1E9 (416)340-1981

All original editorial and advertising material used in this newspaper remains the property of Simcoe-York Group of Newspapers and may not be reproduced without written permission.

We recognize the financial support of the Government of Canada through the Canada Periodical Fund (CPF) for our publishing activities.

"T.F.E. Claridge, Publisher 1903-1964 Fred M. Claridge, Publisher 1964-1974 Thomas M. Claridge 1974-2012 The Free Press and Economist was formed from the amalgamation of The Shelburne Free Press (est. 1875) and The Shelburne Economist (est. 1883) in 1928."



PHOTO BY ALEX SHER

SPECIAL THANK YOU TO FIDDLEVILLE VOLUNTEERS – Over 100 volunteers participated in Shelburne's Fiddleville, making the event the wonderful success it was. As a special thank you in appreciation of the volunteer's dedication and unwavering support, Shelburne Legion President, Liz Whitten hosted a special luncheon on Saturday, 21. "We had a good Legion Week. We hope that turn out for volunteers during Fiddleville week will be even higher next year," said Whitten. Few people know better than Whitten and the volunteers the amount of work involved surrounding Fiddleville. "We can't pay them," Whitten remarked, "and my God! We couldn't have Fiddleville without them. We just want them to know we really appreciate them." If you would like to become part of the many volunteers who help out during Fiddleville, contact the Legion 220 Branch at 519-925-3830. Pictured, left to right, back row: Wayne Mink, Anne Mink, Shelburne Legion President Liz Whitten, Alex Arvelo. Front row, left to right: Carol Fluney, Joan Nasto, Donna Barr, Orville Patton, Lesa Peat and Kim Ricci – just a few to enjoy a special thank you lunch in appreciation of the all Fiddleville volunteers hosted by the Legion on Saturday 21, marking the end of Legion Week festivities.

"What are you looking forward to in the fall season?"



"I'm looking forward to the fall colours and the leaves. I also do cross country running at school."

– Samantha Van Dyke



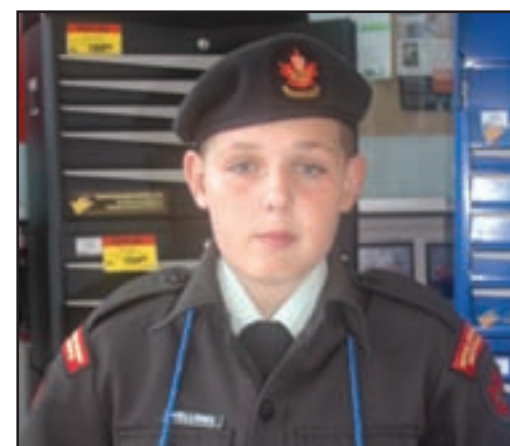
"Getting to hang out with friends in Cadets. We do camouflage, concealment, and navigation exercises."

– Jacobe Lizotte



"Hanging out with friends and doing things with Cadets. We go on navigation exercises."

– Rosie Diluciano



"I've been in soccer for a while so I've been looking forward to that, and going to Base Borden with Cadets."

– Christopher Wellings

WEBPOLL
www.innisfilscope.com

Results from last week's poll:

Does free Wifi influence where you shop or eat?

a) Yes 67%

b) No 33%

The results of this poll are in no way considered to be valid or infallible.

THIS WEEK'S QUESTION

Do you think 'child stars' will pay the price of fame in their adult lives?

a. Yes
b. No

So go to our website at shelburnefreepress.ca and cast your vote!

Terrorists need reform

Dear editor:

On August 13th, the Toronto Star published a lengthy editorial heading, 'Reforming Terrorists'. As I read it, I couldn't help thinking, this could be a force for good or evil. The evil that needs the good, is in the person of Saad Khalid, a convicted Muslim terrorist, now in prison at Millhaven Institution. The good is a Muslim Imam and prison chaplain who sent considerable time with Khalid and other Muslim prisoners. His name is Ramzy Ajem.

As the editorial points out, "Experts who study Islamic terrorists say that many are motivated by a perverse misunderstanding of their religion. Instead of following its mainstream, peaceful teachings, they are recruited by extremists who distort those teachings."

Prison imams such as Ajem can reach such men through Islamic and Arabic studies and help them develop a healthier, more moderate understanding towards other cultures". Certainly all that and more is what Ramzy Ajem as a Muslim Prison Chaplain was passing on to Saad Khalid and other Muslims. He was definitely getting through to Saad because when he had to announce his departure as part of a 49 chaplain lay off called by the Conservative Government, Saad actually broke down and wept.

This is a miserly move by Harper to squeeze a bit of money out of the prison system. And quoting the editorial again, "The loss of even on seasoned chaplain who aims to deradicalize prisoners, can be deeply felt".

I say this move by the government is both unwise and inhumane.

Betty Anderson,
Tottenham

"Poop and scoop" principle should apply to horse owners too!

Dear editor:

Originally sent to: Mayor Ed Crewson & Town ByLaw Enforcement Officer

Our town has a Poop & Scoop bylaw requiring owners to clean up after their animals. Many of us in the William & Robert Street area enjoy walking our dogs in the Fairground Park and are responsible owners. We pick up after our pets. A few more garbage containers in the park would be nice, but that is another issue.

Have you been over to the park since the Fall Fair? It is now difficult to walk my puppy and let him & his friend run and play off leash now because of all the horse 'droppings' strewn throughout the park.

We are now looking everywhere to make sure our dogs do not run over to a pile of horse crap. This, along with a fair amount of garbage still left around, makes our former enjoyable walks a constant vigil to make sure my young puppy is not getting into or picking up something he shouldn't.

Why didn't the town ensure the animal owners that were at the fair cleaned up after themselves, before they left?

While I'm on the subject, another instance of owners not picking up after their animals occurred a couple months back at the Foodland Plaza.

A Mennonite buggy with two horses was parked at the east side of the plaza when both horses took a dump. The owner did not pick it up, instead just rode away. The two piles remained there for over a week, despite a compost bin that sits less than 50 feet away. This should have made the pick up and disposal easy for the owners of the animals.

Let's make a walk in the park an enjoyable experience for all.

Not an obstacle course of possible hazards to keep our pets out of.

Timothy Stevens
Shelburne

Headwaters Racquet Club
tennis · squash · fitness



DON'T HIDE UNDER Your Clothes!

> FEEL GOOD TODAY! We want you to feel healthy this fall! HRC fitness memberships include:

- All Group Fitness Classes
- Unlimited use of gym, sauna & steam room
- Towel service
- Free Fitness Assessment & more!

JUNIOR Classes & Memberships AVAILABLE!

For more information contact Kerri at kerri@headwatersracquetclub.com

P. 519.942.BALL F. 519.940.5676
205467 County Rd. 109, Amaranth

info@headwatersracquetclub.com
www.headwatersracquetclub.com

Meetings 1st Monday of the Month October to April

Starting Oct. 7 at Shelburne Library 7pm
Nov. 4, Dec. 2, Jan. 6, Feb. 3, Mar. 3, Apr. 7

ALL WELCOME!

Volunteers Needed & Welcome!

Trail Permit \$ Stays With The Club That Sells So Make Sure To

BUY DUFFERIN

Permits Available at these locations

McCarthy Signs	Masonville Store
Reinhart Trailers	Hyland Fuels
Strictly Recreation	McCarthy & Sons
M.A.N. Services	Dundalk Equipment

Driver Training Course
Nov. 3rd - 12 years & over

519.925.1948

Mono, 2 others, want answers on waste

BY WES KELLER

Three of Dufferin's eight municipalities are taking county council to task over the current status of waste collection and lack of progress at Dufferin Eco Energy Park (DEEP).

A recent Mono council motion lists the items generally promised by bylaw when the county took over waste collection, along with the ways in which the promises have not been fulfilled, and it asks for a timeline for progress toward a made-in-Dufferin solution.

The motion has been endorsed by Amaranth and Mulmur councils, but received as information by Melancton and Shelburne.

The motion wasn't entirely unexpected. Mono, Amaranth and Mulmur have all seen increases in their costs of waste collection along with their padlocking of their municipally owned landfill sites.

On the other hand, both Shelburne and Melancton have seen their collection costs reduced. Melancton gained curbside collection as well, although it too had to generally close its landfill site

to public use.

The Mono motion notes, among other things, that the county bylaw on waste collection has, as part of its justification, resolutions that taken in combination identify the development of the DEEP as being to utilize composting and gasification as alternatives to landfilling.

"The primary premise for transferring waste to the upper tier was to secure the waste stream for the two aforementioned DEEP projects.

"The Town of Mono contends that the County of Dufferin has not fulfilled, nor will it fulfill in the foreseeable future, the basic: principles set out in Dufferin Bylaw 201029.

"Effectively the county has secured the Waste stream for shipment to Michigan, including waste from municipalities that previously disposed of Waste in local Sanitary Landfill Sites (SLFS)," the motion reads in part.

It goes on to, in effect, accuse the county of breaching conditions of its bylaw, including "not effectively delivered to all County ratepayers cost savings, although the county

has shifted costs from municipalities who do not have SLFS'S onto municipalities who do have their own sites, in breach of the bylaw premise as set out in the bylaw."

It accuses the county of putting ratepayers at the risk of having their waste rejected by Michigan, and then of being forced to pay higher tipping fees in a competitive market.

It goes on to ask the following questions:

"1. What action is the county currently undertaking to bring SSO and gasification at DEEP online and what is the timeline for that plant(s) opening for county waste?"

"2. What action is the county undertaking to reduce costs rather than the shifting of costs between municipalities, and to reverse the cost-shifting between municipalities?"

"3. What action is the county taking to secure a local waste solution in both the short term and the long term and what are the projected timelines, including alternatives to Michigan disposal?"

"4. What action is the county taking to recognize and enable local preference as a means

of cost reduction within focal municipalities?"

Initially, the county had expected to achieve a per-household reduction in waste disposal costs.

Although there has been an

overall cost reduction, it transpired that costs would have to be recovered on a property assessment basis rather than a per-household one. This has meant that costs appear to have risen wherever there are

higher property market values.

Amaranth taxpayers might have gained if the township's proposed sale of its landfill site had been completed, but that transaction died when public opposition arose over its proposed use for contaminated soil treatment.



PHOTO SUBMITTED

MAKING CHANGES FOR CANCER RESEARCH – Hope Fifield, Aimee Batchlor and Linda Orvis (pictured above at Changes Hair Salon in Shelburne) helped owner Glenda Keeping to participate in the recent 60km Weekend to End Breast Cancer walk. "Linda and her granddaughter Aimee called me and said they wanted to donate their hair for cancer," Glenda told the Free Press. "Coincidentally, Hope, a little girl from Orangeville, called me the same week, and she too wanted to cut and donate her hair as well." Between the three ladies, more than 38" of hair was cut off and \$1500 raised (through pledges from family and friends). "Originally Aimee and Linda wanted to cut their hair to their chin, but at the last moment decided to shave their heads. I was so surprised!" Glenda said, who needed a minimum donation of \$2000 to participate in the Walk. "It was a double whammy – donating both their hair and their pledge money. They made it possible for us to walk in honour of ladies battling cancer." Glenda was walking in honour of her sister, Jennifer Boss, who passed away from uterine cancer two years ago this November 11th, after a 14 year fight with the disease. Glenda was joined in the Walk by employee Karli Brown, and family members Cheryl Hunter and Jenna Leigh, plus customers Chris Posthumus and Carolyne Hoshooey (a cancer survivor herself). In all, the group raised more than \$14,000 for the worthy cause.

Shelburne under construction: How surprising progress can be!



PHOTO BY ALEX SHER

(L to R) Surprised by their arrival on her property, homeowner, Dianne Nixon and CDC Heavy Equipment Operator Mike Kearney, lighten the situation with humor as they stand beside construction installation of large water main pipes on Owen Sound St. that will increase water pressure for Nixon and her immediate neighbors as it makes its way towards new community development.

BY ALEX SHER

Imagine coming home from night shift, finally getting to rest in the morning and then being awoken to the unexpected sound of massive construction in your front yard? When shift working Nurse, (P.S.W Personal Support Worker) Dianne Nixon realized a construction crew were on her front lawn, obstructing and demolishing the entrance to her driveway, it was already too late. In a frantic attempt to save her septic bed perimeter from being compromised by the weight of heavy machinery, Nixon ordered the machinery be removed, the construction crew complied immediately, and the work carried on.

Nixon, on 720 Owen Sound St. and her neighbors will be inconvenienced by the construction while new water

main pipes are laid to accommodate expansion and prepare for the new subdivision already underway in Shelburne North.

Normal protocol in these situations involve letters of notification, follow up phone calls, door to door communication and in most cases all homeowners are completely aware of construction situations well in advance of the actual date and have ample time to plan ahead.

Every now and then, and especially in the case of busy young families, attempts to

contact fail and are not followed up on. Nixon admits she received a letter of notification announcing a crew would be expanding water main pipes and she vaguely remembers mention of Susan Street, and like most homeowners, never thought the situation would include her. In any case, the lack of follow up communication left Nixon exhausted, blind-sided, frustrated, unable to leave her household, facing the devastation of her front yard and as a result of the construction, Nixon's young son, a newspaper courier for the

Shelburne Free Press was unable to deliver on the night of Thursday, September 19th.

"I'm most frustrated with the lack of communication involving notification, and lack of empathy initially when addressing my situation," explained Nixon. "I am so grateful for the city's immediate response and they really were supportive and understanding. That part was very impressive. Clearly Shelburne residents matter to City Representatives."

The simple facts remain: a family were not aware of the construction and the colossal impact it would present in their

lives, the construction company were not aware the homeowner had not been informed, and the stress surrounding the situation was only compounded by frustration on both sides of the situation.

Moving forward, the water main pipes installed are much needed and will improve water pressure exponentially for Nixon and her neighbors, and while Nixon readily agrees progress and expansion are great for Shelburne, she wishes her situation had been handled differently.

Construction crews are more than accustomed to homeowner frustration as change is al-

most always upsetting, but they are just doing their jobs. If anything, this article can raise awareness surrounding the massive machinery utilized when notifications are sent out announcing pending construction, and the unnecessary stress caused to homeowners when communication announcements fail to inform. Perhaps this quote sums it up best:

"The essential quality of life is living; the essential quality of living is change; change is evolution; and we are part of it."

– Author John Wyndham, The Chrysalids

CTR Books
USED BOOKS

18 Robb Blvd. Unit 3
Orangeville, ON

Toonie Days
October 1st until
October 31th

Tuesday-Friday
10:00AM until 6:00 PM

Saturday
10:00AM until 4:30 PM

Buy 2 or More and
Choose from
60,000 Books
\$2.00 each

Some Restrictions apply
519-941-3763

SEPTEMBER 27 - OCTOBER 27

BIG Savings

See insert in today's paper.

hydro one
Partners in Powerful Communities

Autumn Splendour
ONE OF A KIND
Artisan/Craft Sale
Saturday, September 28 9am-3pm
ALL ITEMS HANDMADE

Rosemont Community Hall Hwy 89 West of Alliston
For more information, please call Grace Graham 705-435-3689
or Shirley Ford 705-435-7691

Introducing the completely redesigned Outlander MAX.
When you hit the trail, it doesn't hit back.

Enter to **WIN**
4 passes to **BEAR CLAW**
ATV TOURS



With the reinvented passenger ergonomics in the Can-Am® Outlander® MAX, riding two-up will never be the same. Every aspect of passenger seating has been improved to increase comfort, from the lumbar support to the foot rests. Add to that our revolutionary chassis and industry-leading performance, and the Outlander MAX can handle anything the trail throws at it. So all you're really feeling when you're out there is the thrill of the ride.

Outlander MAX LIMITED Outlander MAX XT-P Outlander MAX DPS™

CAN-AM ATV OPEN HOUSE
Saturday, September 28, 2013
9am-4pm • BBQ Lunch 12Noon

Larry's Small Engines
4km North of Orangeville on Hwy#10
519-941-1517 • www.larrysmallengines.ca

can-am

Find the one that's right for you at can-am.brp.com.

© 2012 Bombardier Recreational Products Inc. (BRP). All rights reserved. ® and the BRP logo are trademarks of Bombardier Recreational Products Inc. or its affiliates. In the U.S.A., the products are distributed by BRP US, Inc. BRP reserves the right, at any time, to discontinue or change specifications, prices, details, features, models or equipment without incurring obligation. Some models described may require optional equipment. BRP highly recommends the use of ATVs off-road. Always wear your seat belt and proper riding technique. For safety and proper information, see your operator's manual. Call the Canadian Safety Council at 813-739-5333 ext. 327. ATVs can be hazardous to operate. For your safety, always wear a helmet, eye protection, and other protective clothing. Always remember that riding and snowblowing don't mix. Never ride on paved surfaces or public roads. Please carry passengers on any ATV (not specifically designed by the manufacturer for such use. Always respect its rated design, and maximum speeds. Use the appropriate vehicle or correct terrain. ATVs that are classified by Category 2 of the Canadian Tire Rating are intended for recreational use only and are not to be operated on or in other BRP areas by "THE AD LIGHTLY" in public and private lands. Preserve your future riding opportunities by showing respect for the environment, local laws and the rights of others when you ride. Make sure that all laws, regulations, and BRP's warnings/recommendations for ATV passengers are respected. Ride responsibly. SAFETY.

Shopping In Shelburne

A Great Way To Support Local Business

Shelburne Primary EyeCare

207 First Avenue East, Shelburne, ON, L9V-3J9
519-925-3320 | www.shelburneeyecare.ca

Our primary focus is you, and the health of your eyes

We receive 80% of our lifetime UV exposure by the time we reach 18 years of age. Protect your child's eyes like the Doctors and Staff protect their children's eyes.

Your child's first exam should be an eye exam.

no frills price!
is our EVERYDAY price!

EVERYDAY!
1.97

Real Canadian Spring Water
24 x 500 mL

WON'T BE BEAT

DOMINION LENDING CENTRES
AC Mortgage Services Ltd
License # 11590 - Independently Owned & Operated

Check 'em out!
Dominion Lending Centres,
they're a beauty!

Carol Freeman
Broker

Tel: 519-925-6700
Cell: 519-938-6518
Fax: 519-925-6800
Email: carol.acmortgages@gmail.com
www.carolfreeman.ca

2 Family Home, 5 Bdrm
2 Acres \$500,000

3 Bdrm, Low Maintenance
Shelburne \$335,900

For Successful Buying & Selling Call
Marg
MCCARTHY
Sales Representative

Toll Free: (800) 360-5821
Direct: (519) 216-1756
Fax: (519) 925-6160

ROYAL LEPAGE
RCR Realty, Brokerage
INDEPENDENTLY OWNED AND OPERATED

marg@royalpage.ca www.margmccarthy.com

Who do you help by shopping here?
See above.

The money you spend at our Thrift Shop helps feed and care for animals at the Ontario Society for the Prevention of Cruelty to Animals. Now that's a great reason to go shopping!

ONTARIO SPCA
Paws & Claws Thrift Shop
126 Main Street East
Shelburne 519.925.9956
www.orangeville.ontariospca.ca

GLOBAL PET FOODS

SHELBURNE
226 First Ave East
Shelburne, ON L9N 1S2
Phone: 519-925-3471
Fax: 519-925-4032

Equine Supplements & Treats available, Saddle, Bridle & Stall plates made on site. Also Dog & Cat name plates made on site.

Check us out on Facebook & Twitter!!

We're passionate about healthy choices for your pets. By offering a wide variety of unique and wholesome pet products, we hope to help pet parents make informed decisions for the wellbeing of their family companions.

15% OFF WITH THIS AD!

Cookie of the Month Club
www.globalpetfoods.com

Shelburne Primary Eye Care

At Shelburne Primary Eye Care, we are committed to providing ocular health care for the entire family. An annual eye examination should be performed as insurance for maintaining good vision and proper eye health even if there are no obvious problems being experienced.

Did you know?

- Children should have their first eye exam at the age of six months.
- Young eyes are not always healthy eyes. Often there are no signs that a young child is not seeing well. How they see is normal to them so they don't complain.
- 80% of a child's learning is based on vision. Children who struggle to read and remain on task may have an undiagnosed vision problem. Healthy eyes and vision are a critical part of your child's development. Their eyes should be examined regularly as many vision problems and eye diseases can be detected and treated early.
- 20% of school age children have undetected vision problems.
- 80% of all sun damage to the eyes happens before

the age of 18. Unprotected exposure to UV light may put you at a higher risk for cataracts and macular degeneration later in life.

- Children born in 2009 starting JK can get a complimentary pair of glasses through the Eye See Eye Learn program if vision correction is required.
- Children's eye exams are covered by the Ontario Health card until 19 years of age.

Dr. Colette Whiting, Dr. Sandra Gillis Kennedy, Dr. Andrea Jones, and staff welcome you to visit our optometry clinic for all your eye care needs. Dr. Whiting has been practicing in Shelburne for 27 years and is an active member of the Shelburne Rotary Club and the Shelburne Horticultural Society. Dr. Gillis Kennedy has a special interest in Diabetes and Nutrition and has practiced in Shelburne for over 21 years. In 2005 Dr. Whiting and Dr. Gillis Kennedy broke ground on their new state of the art facility in the heart of downtown Shelburne and in 2011 they welcomed associate Dr. Andrea Jones to the practice. Dr. Jones is a member of the Honeywood Figure Skating Club Executive



Committee and Synchronized Skating Team. Conveniently located at 207 First Ave. East, our facility is wheelchair friendly and was the first recipient of the Melissa Kelly Excellence in Access Award in 2011.

Good vision does not always equal healthy eyes and early detection is your best defence against vision loss. In order to detect vision problems and eye disorders early on, our dedicated doctors emphasize the importance of yearly comprehensive eye exams for the entire family. Our services include supplying, fitting, and adjusting your prescription eyeglasses or

contact lenses. Our dispensary boasts a large selection of quality frames to match your unique style and personality. Skilled technicians will assist you in selecting the perfect frame and lenses custom designed for you. We also carry a large selection of quality sunglasses to protect your eyes from harmful UV rays. Our knowledgeable consultants will help you choose a pair to suit your lifestyle and get you looking fabulous!

At Shelburne Primary Eye Care, our primary focus is you and the health of your eyes. New patients are always welcome!

HOLMES APPLIANCES & MUSIC SHOP

We Service What We Sell!

- Wide selection of Musical Instruments & Accessories
- Full Line of Major Appliances

Proudly Serving Shelburne & Area for over 50 years!
519-925-3037
www.holmesappliancesandmusic.com
135 MAIN STREET WEST, SHELBURNE

Pazazz
Fashion for your life

New
Tan Jay & Alia Petites

122 Owen Sound St
Shelburne
(519) 925-3232
Open Monday - Saturday

Cobwebs & Caviar
EXCITING FALL CLASS LINEUP & INTRIGUING NEW MYSTERY QUILT PROGRAM!

SCAN FOR UPDATES!

Some treasures are not hidden

FUNKY NEW JEWELLERY FOR YOUR GREAT FALL LOOK!

follow us at cobwebsandcaviar.blogspot.ca
(519) 306-3000 | cobwebsandcaviar@gmail.com
143 Main Street, Shelburne

Auto Centre
DUFFERIN COUNTY INC.

710-A Industrial Road Shelburne
(519) 925-0044
www.autocentredufferin.com

Today's Technicians
Using Tomorrow's Technology

Since 2001

CRAFT BAKERY
Jelly
café

- Organic
- Fair Trade
- Locally Roasted

www.JellyCraft.com
519-925-1824 or 1-888-94-Jelly
120 Main Street East, Shelburne

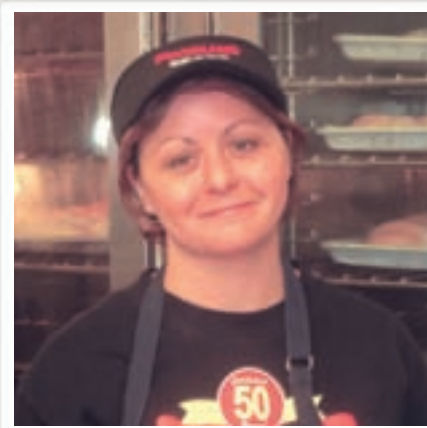
GIANT TIGER
226 FIRST AVE., SHELBURNE
519-925-6857

save on everything store

Shopping In Shelburne

A Great Way To Support Local Business

Shelburne FOODLAND
Fresh food. Friendly neighbours.



Fresh is best...

There is something magical about the smell, taste and texture of freshly made bread. That's why our bakers start early everyday at Shelburne Foodland to bring you the freshest selections. We produce a wide variety of breads, rolls, cakes, muffins, danishes, donuts – just to name a few. Need a cake for a special occasion? We can help with that too. For birthday, engagement, anniversary, or your own special event, our friendly and experienced staff at Shelburne Foodland will be available to help you make your important decisions.

Margaret Troke - Bakery Manager

McCarthy SIGNS Co.Ltd.

Signs of Quality

BANNER BLOW OUT

2ft x 8ft Banner ONLY \$80

many more sizes available

SALE ON NOW

Call us for sizes & details

www.mccarthysigns.com

519-925-3884 800-563-0946

**TO ADVERTISE IN OUR 'SHOPPING IN SHELBURNE' PAGES
PLEASE CALL 519-925-2832 OR email@shelburnepress.ca**

Shelburne Town Pharmacy's celebrates its grand opening – a huge success



PHOTOS BY ALEX SHER

Shelburne Town Pharmacy owner Sanjay Lekhi, surrounded by family, friends, and Shelburne residents, welcomed MP David Tilson and Mayor Ed Crewson to his grand opening ribbon cutting ceremony held on Saturday September 21.

BY ALEX SHER

Shelburne Town Pharmacy celebrated its official Grand Opening on Saturday, September 21 and in what Shelburne residents are coming to realize, pharmacy owner Sanjay Lekhi is a pharmacist in a league of his own.

A newly recognized Chamber of Commerce Member, Lekhi is not new to Shelburne having worked in No Frills Pharmacy from 2004-2008 where he gratefully won the Pharmacist of the Year Award.

Humble, caring and well loved by his friends and co-workers, Lekhi greeted all who attended the grand opening in his usual sincere manner. Genuine in his intention to serve his community, Lekhi offered a free barbeque, discount prices, and a \$5 Giant Tiger Gift Card with every

purchase \$25.00 or more. In addition Lekhi will be offering his waiting room to fellow businesses in the future for free to further improve the quality of life for the residents of Shelburne and encouraging other business to thrive. During the grand opening many businesses set up tables for free in the waiting room showcasing what their businesses have to offer.

On hand during the event was Zumba Instructor, Rena Rodrigues, Mary Styles, MC, CCC, Counsellor in Mental Health, Debra Jones, Reiki Master, Debra Jones, Mary Kay Sales Director, Michelle O'Driscoll, her Assistant, Danielle Jenkins and Hair Dresser, Judy Stevens.

Each one of these businesses cater to the positive aspect and perspective in a person's

life and that is exactly where Lekhi is in a league of his own presenting uncharted territory in retail philosophy. The very idea that one business can benefit another is not a new concept, but the idea that several businesses working together can build a better community through positive impact and giving back to their community is new.

An example of this kind of generosity which Lekhi feels is a natural course to take is the Customer Appreciation Barbecue which is scheduled for October 10th, and of course all are welcome and all is free.

"To say thank you to all my customers and to invite Shelburne residents to a free barbeque is the least I can do. It's very important to me to recognise my customers and let them know they are not just

customers, and it's a better way to get to know people, be a part of the community," said Lekhi. Reciprocally, Shelburne residents get to know Lekhi and the more you know, the more you come to realize, there is a new "friend" in town, one you can rely on, and one who actually cares.

Customer, George Hunt attended the opening and had this to say, "Sanjay is a great guy. The more we talked, the more I found out we had a lot in common. He's my friend." Hunt mirrored the general sentiment from all those who attended the Shelburne Town Pharmacy Grand Opening making the event a huge success.

For more information, contact Shelburne Town Pharmacy at 519-306-5500.



Brij Singh, with Zumba Instructor Rena Rodriguez, Sanjay Lekhi, and Zumba Instructing Assistant, Judy MacDonald demonstrated Zumba moves during the grand opening of Shelburne Town Pharmacy. In the spirit of health and fitness, Zumba classes will be held in the back room at the Pharmacy. Lekhi offered the room to Rodriguez for free to help the community and help a new business get off the ground.

Shelburne Legion news

Thank you to everyone who participated in Legion Week. Our Golf Tournament was a great success. Congrats to Peter, Jackie, Robert and Carolyn for coming in 1st place for the third year in a row. Birthday wishes to Lesa Netzke, Donna Barr, Bob Webb and Bruce (Almighty) Galbraith. This Saturday September 28th is our 50's and 60's dance, with entertainment by Peter & The Elegance. Tickets are \$15 each, which includes Hamburger and French Fries. Come on out and wear your best Happy Days out fit, ticket still available at the bar. Our next wing night is on October 4 with DJ Terrence.

Headwaters Festival: Fall's most vibrant arts event

Headwaters Arts shows off its true colours with three, art-filled weekends, running from Sept. 20 – Oct. 6, 2013.

The Headwaters Arts Festival celebrates the arts across the region this fall. Expect parties, performances, juried art shows, hands-on workshops and studio tours – an array of events over three consecutive weekends. More than 150 visual and performing artists are showcased.

For more information, visit the Festival's website <http://headwatersarts.com/festival/>

Remaining events include:
ARMCHAIRS, AUTHORS & ART- Thursday, Sept. 26, 7 – 10 p.m. (Doors open at 6:30 p.m.)

Each fall, Headwaters welcomes some of Canada's best writers for an evening of readings, discussion, book sales and signings, drinks and refreshments.

The evening's moderator is Nicola Ross, and she welcomes four authors: Don Gillmor (Mount Pleasant – a comic novel about money, real estate and financial expectations), Oakland Ross (The Empire of Yearning – a sweeping tale of competing allegiances, set in 19th century Mexico), Wayne Johnston (The Son of a Certain Woman – a witty and wise coming of age tale set in St. John's, Nfld) and Maureen Jennings (Beware This Boy – a mystery set in Birmingham during the Blitz where a munitions factory has just exploded).

Refreshments will be served, courtesy of The Wine Coaches, Flying Monkeys Craft Brewery, Woolwich Dairy, French Press Coffee House and Bistro.
Event Site: SGI-Canada Caledon Centre, 20490 Porterfield Rd., Alton

Tickets: \$30 at Booklore, 121 First St., Orangeville 519-942-3830 or online at www.headwatersarts.com or at the Festival office in the Alton Mill Arts Centre, 1402 Queen St., Alton, 519-943-1149.

ART EVENTS:

From theatre presentations to gallery shows to a special screening at the cinema and outstanding exhibitions, there are events scheduled in 17 different venues. Here are a few highlights:

- Wichita Lineman: The Music of Glen Campbell – Sept 26 & 29 at 2 p.m.; Sept. 27 & 28 at 8 p.m. Tickets: \$40, available at Theatre Orangeville

- Monday Night at the Movies – Oct. 7 at 7:30 p.m. Spring & Arnaud: Art and Mortality, a tender story about Canadian artists Spring Hurlbut and Arnaud Maggs. Tickets: \$12, at Booklore, or on film night at Galaxy Theatres, Orangeville.

OPEN STUDIOS:

The Hills are alive with creativity. In the Hills of Headwaters there are over 200 artists working in every media imaginable. Painters, potters, glassblowers, woodworkers, weavers, sculptors and jewellers all create here.

And during the Headwaters Arts Festival, their studio doors are open! See art in action and witness the creative process. Visit century homes, schoolhouses and historic buildings rejuvenated into studio space. Travel the back roads, and take in the spectacular landscapes decked out in fall colours. Indoor Studio Tours are featured at the Alton Mill Arts Centre in the village of Alton, Williams Mill Visual Arts Centre in Glen Williams, and Dragonfly Arts in Orangeville.

Countryside, check out the North of 89 tour and the Hills of Erin Studio Tour.

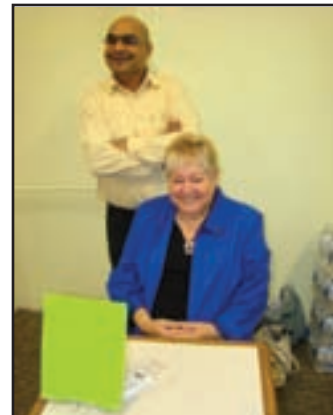
Individual studios also open their doors. Silver Creek Arts Project in Caledon, Terra Trove Studio in Orangeville and Arts II Studio in Waldemar. Dates and hours vary, so check the listings at <http://headwatersarts.com/festival/open-studio-listings> to avoid disappointment.

Art Happens at KIDS' ARTS FEST

Kids' Art Fest is an opportunity for young people to sample the arts, to try something new without committing to a long-term program. Workshops are presented by working artists. And budding artisans are encouraged to come out and load a paintbrush, dance a dance, capture a shot, hear the words or manipulate the clay...all in the spirit of creativity.

Kids can get a taste for dance at Citrus Dance Studio, or painting at Maggiolly Art Supplies, Orangeville, or with Andrea Bird (in The Hive - Studio 201) or Mark Grice (in the Bridge Workshop) at the Alton Mill Arts Centre. Or try photography with Patty Horton in East Garafraxa, pottery with Ann Randerad at the Alton Mill or at Pottery Parties in the Hills, Orangeville, beadwork at Dragonfly Arts in Orangeville, chain maille bracelet making at Gallery Gemma in the Alton Mill Arts Centre, or book creation with Runley Books also at the Alton Mill.

Pre-registration required for most sessions. See a full list of Kids' Art Fest events <http://headwatersarts.com/festival/kidsfest-events>



SHELBURNE FREE PRESS

This week in police news...

Shelburne Police Service responded to 85 calls for service between September 15th and September 22nd 2013.

Theft of ice cream signs: Several ice cream signs were reported stolen on Wednesday September 18th. The signs belonged to Blitzfull Treats, an ice cream shop attached to the Ultramar Gas Station located at 517 Main Street East in Shelburne. If anyone has any information on the location of the signs or who was responsible, please call the Shelburne Police at 519-925-3312 or leave an anonymous tip through Crime Stoppers at 1-800-222-TIPS (8477).

Valuables and cash stolen from parked cars: The Shel-

burne Police took two reports of valuables and cash stolen from cars. One of the thefts occurred on September 19th and the other on September 14th or 15th. If anyone has any information on these incidents, please call the Shelburne Police at 519-925-3312 or leave an anonymous tip through Crime Stoppers at 1-800-222-TIPS (8477).

The Shelburne Police wants to remind everyone to take steps to minimize becoming a target of theft from vehicles. Always lock all car doors and close all windows when the vehicle is parked at home, at work, while shopping or attending an event. Never leave valuables in the vehicle – es-

pecially in plain sight. Leaving purses, cell phones, GPS units, tools or any other valuables in plain sight increases the chance that your vehicle will be targeted by those with criminal intentions.

Domestic dispute call results in two assault charges for incidents dating back as far as 1998: On Friday September 20th Shelburne Police responded to a domestic disturbance call which led to allegations of a history of assaults. The investigation resulted in an adult Shelburne male being arrested and charged with two counts of assault for incidents ranging from 1998 to 2010. The name of the accused is being withheld.



PHOTOS SUBMITTED

Chair of the Shelburne Public Library Board, Geoff Dunlop and CEO, Rose Dotten with the Town of Shelburne, Excellence in Accessibility Award presented at the Town Council Meeting to Shelburne Public Library for their Daisy Reader program. See full story on **BACK PAGE**.

Woman arrested for uttering threats

On Wednesday, September 11, at Grey County OPP arrested a Wellington North Township woman after she allegedly threatened to kill certain employees at the Golden Ontario Products, an abattoir located on Highway 89 in the Township of Southgate, where she is the plant manager.

That morning, the victim

was at work when he received a telephone call from the accused shortly after 8 a.m. After a brief conversation, the accused threatened to kill him and two other employees, advising she had her guns and was coming.

Police attended the accused's residence in Kenilworth where she was arrested without in-

cident. Six firearms and a quantity of ammunition were seized from the residence.

Gloria Frances Pringle, 45, was charged with uttering threats to cause death or bodily harm under the Criminal Code.

She is scheduled to appear in court in Owen Sound on Thursday, October 10.

"A seat belt saved my life"

A young woman is crediting an OPP officer for saving her life after surviving a motor vehicle collision that could have potentially ended it had she not received a seat belt warning days before the crash.

Jennifer Walker, a 19 year-old university student was driving her car in Exeter, Ontario, on May 23, when OPP Constable Ron Young, on bicycle patrol, pulled her over when he observed her talking on her cell phone and not wearing her seat belt.

Const. Young issued Jennifer a \$155 ticket for driving while using her cell phone but used police discretion and let her off with a warning and education about not wearing her seat belt. At the time, Jennifer had no idea how pivotal that moment would be in the days ahead, but she made a decision to change her driving behaviour to enhance personal safety.

Just two days later, on May 25, Jennifer's car was struck broadside by a vehicle that failed to stop at a stop sign. Jennifer sustained minor

breaks and bruises in the incident and, according to the OPP, the crash was serious enough to have killed her had she not been wearing her seat belt. A few weeks after her traumatic ordeal, Jennifer contacted Const. Young to thank him for issuing her a ticket and for saving her life.

"Jennifer's story is a perfect example of how wearing a seat belt can dramatically change the outcome of a collision and may have actually saved someone's life. Sadly, people continue to die on our roads because, unlike Jennifer, they continue to ignore our messages about the important role seat belts play in saving the lives of men, women and children involved in road crashes," said Chief Superintendent Don Bell, Commander of the OPP Highway Safety Division.

"With the OPP Fall Seat Belt Campaign set to get underway across the province, I encourage all Ontarians to listen to Jennifer's story. The OPP would like to see every road user make the same com-

mitment that Jennifer made to change her driving behaviour because there is no question that fewer people would die needlessly on our roads," said OPP Deputy Commissioner Larry Beechey, Provincial Commander, Traffic Safety and Operational Support.

To view or download a short video about Jennifer's story, go to <http://youtu.be/6oy-H0UexsHc>

The OPP Fall Seat Belt Campaign runs from September 26 to October 13, 2013. During that time, OPP officers across the province will be highly visible enforcing and raising awareness of seat belt laws in an effort to change driving behaviour and save lives.

E-mail fraud

Caveat Emptor. It's Latin, and it means "Let the buyer beware". It's more than just good shopping advice, it should be in your thoughts when you read your e-mails. Every year, Canadians are defrauded of thousands of dollars through the Internet.

Common to most fraudulent e-mails are three things: greed, vanity or sympathy – we've all heard of, and many of us have received, those e-mails offering millions of dollars if you'll just help the writer get his money out of a foreign bank by giving him your banking information.

Another common scam we've been seeing is a virus that takes over your computer. It claims to be from law enforcement and puts up a screen that says your computer has been locked for illegal activities.

If you receive correspondence that makes you suspicious, delete it, block the sender, or call police.

Visit <http://www.antifraud-centre-centreantifraude.ca/english/home.html>



Mayor Ed Crewson, Shelburne Accessibility Advisory Member Debbie Harrison and CEO, Rose Dotten receiving the Excellence in Accessibility Award on behalf of Shelburne Public Library.



TOWN OF SHELBURNE Good Food Box Program

THE GOOD FOOD BOX IS BACK!!

To purchase a box of FRESH produce, drop off \$12 at any of the following locations:

Shelburne Town Hall
Masonville Corner Store
Early Years Centre, Shelburne

Money must be received by the first Friday of each month.

Boxes will be ready for pick up at the Mel Lloyd Auditorium on the 3rd Wednesday of each month.

For more information contact:
Patti Hossie
Town of Shelburne Municipal Office
519-925-2600 Ext. 238
phossie@townofshelburne.on.ca

"IF YOU EAT YOU QUALIFY"

Open House

*Come Join Us For a Meet and Greet
As We Welcome Our New Physicians to Shelburne*

Hosted by: The Shelburne Centre for Health
Place: 167 Centre Street, Shelburne
Date: October 9, 2013
Time: 5:00 p.m. - 7:00 p.m.

You're invited to meet, greet and mingle with the Doctor's, Health Professional's and Office Staff. There will be light appetizers, refreshments and cake! Cake cutting will be held at 5:00p.m. NO R.S.V.P. Necessary. If you require more information please call (519) 925-0017

SHELBURNE FRESH VARIETY

Corner of Owen Sound & Jane Street - (519) 925-3497 - Mon.to Fri. 7 a.m. - 9 p.m. Sat. & Sun. 8 a.m. - 8 p.m. - Owned and operated by Brent & Collette Gray

Prices in effect from Wednesday, September 25 to Tuesday, October 1st

<p>EVERYTHING YOU NEED... <i>for your fall decorations</i></p> <p>Large Pumpkins - Pie Pumpkins Gourds- Large to Small Hay Bales</p>	<p>Hardy Garden Mums</p> <p>\$6⁹⁹ each or 4/\$25 <small>large 2 gal. pot</small></p>	<p>Locally-grown FRESH JUMBO Cauliflower</p> <p>\$1⁹⁹ each</p>
<p>Last of the Field, and Roma Tomatoes</p> <p>\$17⁹⁹ /Bushel <small>for sauce</small></p>	<p>Locally-grown FRESH Broccoli</p> <p>\$1²⁹ /bunch</p>	<p>Last Of The Freestone Peaches</p> <p>\$4⁹⁹ /Heaping 3 L. basket</p>
<p>New Crop Locally-grown Apples any size bushel you need Cortland Macs, Galas, Spies, Honey Crisp Apples</p>		

SHELBURNE SPORTS

Legion tournament cold, but fun



BY BRIAN LOCKHART

It was one of those days where an extra jacket and a hood would keep you warm. It wasn't so much the cool temperatures as it was the wind blowing across the course. In fact a pair of gloves wouldn't hurt either as golf-

ers made their way around the nine hole course at the Dundadel Golf Club just north of Dundalk on Highway 10, on Sunday, September 22. It didn't matter though as 42 golfers turned out for a day on the links as part of the Royal Canadian Legion Shelburne

Branch 220 annual golf tournament. "It's not a fundraiser, it's just a fun event," said tournament organizer Lesa Peat. "This is the final, end of year tournament for Dunadel. "We had 42 golfers and more for dinner tonight."

The tournament got underway at noon with a shotgun start and a four person best ball style play.

Of course at the end of the day there was an opportunity to claim bragging rights for the best or most unusual activity on the golf course.

Although there were many stories to tell, the top story of the day, and verified by members of the foursome, was Bruce Galbraith's shot that shanked to the right and hit a small tree. The ball returned 180 degrees and Galbraith caught the ball in his hand at the tee. That's something you won't see every day!

After the tournament, members took some time to get their body temperatures back up to normal before returning to the Legion for dinner.

"It's a fun day," Peat said. "We have draws and prizes donated by local businesses back at the Legion."

The Legion hosts the tournament in September every year and it has become an annual event.

Shelburne Arena gets ice!

BY DEBBIE FREEMAN

The most eagerly awaited week of the year for ice hockey players, boys, girls and adults alike is upon us with a bang. Hockey parents throughout Shelburne get ready, for the early morning games, the miles of travelling to arenas, and the thought of "Here we go again!".

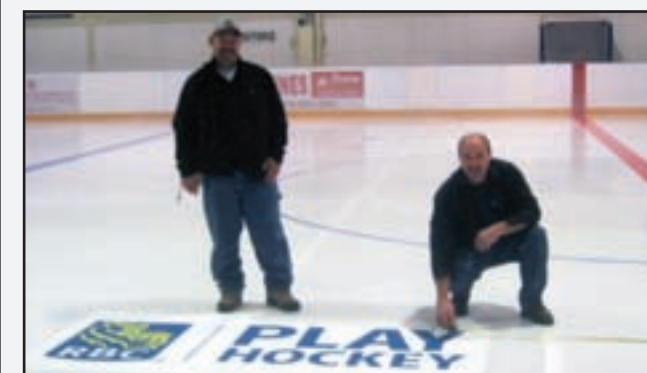
Yet little do we know about what goes on behind the scenes in preparation for this popular sport. Rick Thompson the Shelburne Arena's maintenance manager and his assistant Keith Leveque, spend a whole week preparing the arena floor for the many games and flocks of players that will skate on the ice for practice and games this season. Officially the Shelburne Minor hockey started on Monday.

Yet Rick and Keith have spent hours preparing the infamous surface for its seasons' battering from skaters.

After spray painting the edge boards white, they lightly freeze the base of the rink with a hose called "Pebbling". Their next job is to neatly lay and line up the sponsors logo's on the rink floor. The key to arranging all these material logo's created by L.C. Creations in Shelburne is team work and co-ordination. Once they are satisfied that the sponsor logos are in line they spray them lightly to freeze and hold them in place. Then they gradually flood the rink with water over 3 days to get the finished rink which is always 1/4 inches thick with ice. Rick uses approximately 15,000 gallons of ice cold water making sure that the temperature in the arena is always 22 degrees

This week long process is time consuming and is done with military precision. The process has to be followed exactly to the book and a small slip up could mean an uneven ice surface and hours correcting it.

Little do we know about the Many hours they spend perfecting a good ice rink, and the feeling of satisfaction when they watch the hundreds of games played on their ice and the shrills from the crowd. They take care of the rink like their baby and daily maintenance is a must. So next time you are playing or watching a hockey game at CDRC think about the hard work that goes into preparing this splendid arena that we have in Shelburne.



Keith Leveque and to the right is Maintenance manager Rick Thompson laying the templates for the ice logos.

Redwings struggle to get on the plus side

BY BRIAN LOCKHART

Another loss on the weekend leaves the Shelburne Redwings still looking for their first win of the season.

The squad travelled to South Muskoka on Friday, September 20, to take on the Shield, but came up short and were shut-out 6-0 by the home team.

It was the third loss for the Redwings.

The Shelburne squad were called on six minutes in minors in the first period and four minutes in the third period, but otherwise kept their play clean and took no penalties in the second period.

It was the second game in a row where the Redwings left the ice without scoring.

On Friday, September 13, they were in Temiscaming and took a 10-0 loss to the Titans.

They did better in their first game on September 7, when they travelled to Powassan to take on the Eagles and left with a 4-3 loss.

In that game they were behind 2-0 in the early going but scored twice in the second period to make it a 3-2 game going into the final 20 minutes.

The Eagles score again to make it 4-2, but a final Shelburne goal late in the game brought them within a goal of tying it up.

It's still early in the sea-

son but already some League front runners are starting to take their place in the League standings.

The defending champion Bradford Bulls are in first place with five wins and one overtime loss.

They are followed by the Toronto B Ice Jets in second place with five wins after six games, and South Muskoka who are undefeated after four games.

The Redwings will bring it home this Friday (Sept. 27)

with their first game of the season on home ice at the Centre Dufferin Recreation Complex.

They will host the Lefroy Wave to open in front of home town fans.

The puck drop is scheduled for 8:30 p.m.

THE 2014 REP TRYOUTS ARE COMING SOON! MAKE SURE TO MARK YOUR CALENDARS.

The Tryouts will be held on both Saturday September 28th and Sunday September 29th at Rotary Park. Please attend the tryout for your own age group on both days, as scheduled below:

Saturday	Rotary 1	Year Born	Rotary 2	Year Born
9:00	U9	Girls 2005 or 2006	U9	Boys 2005 or 2006
10:15	U10	Girls 2004	U10	Boys 2004
11:30	U11	Girls 2003	U11	Boys 2003
12:45	U12	Girls 2002	U12	Boys 2002
14:00	U13	Girls 2001	U13	Boys 2001
15:00	U14	Girls 2000	U14	Boys 2000
16:00	U16	Boys 1998	U15	Boys 1999

Sunday	Rotary 1	Year Born	Rotary 2	Year Born
9:00	U9	Girls 2005 or 2006	U9	Boys 2005 or 2006
10:15	U10	Girls 2004	U10	Boys 2004
11:30	U11	Girls 2003	U11	Boys 2003
12:45	U12	Girls 2002	U12	Boys 2002
14:00	U13	Girls 2001	U13	Boys 2001
15:15	U14	Girls 2000	U14	Boys 2000
16:30	U16	Boys 1998	U15	Boys 1999



Orangeville Minor Soccer Club
76 Centennial Rd, Unit 8
Orangeville, Ontario L9W 1P9

Tel 519-941-2517 Fax 519-941-0100
office@orangevilleminorsoccer.ca
www.orangevilleminorsoccer.ca

OMSC is affiliated and insured with the OSA and our regional District association.



Your Local Whole Family Health Food Store

- Healthy Foods • Yoga/Massage
- Unique Gifts • Art/Meditation
- Smoothie Café • Workshops/Retreats

Ellen Brakel • Joey Lemieux
519.925.2822

Mon.-Sat. 9:30-5:30 • Sun. 11-4
116 Main St. E., Shelburne L9V 3K5
info@soaringheartwellness.ca

Shop On-Line!

www.soaringheartwellness.ca

The Shelburne Red Wings Junior "A" Hockey Club is looking for new billet houses to accommodate the teenage players from other countries, who are in Canada at the World Hockey Centre for a maximum of 6 months.

As a billet family you will receive \$500 per month. You will also gain free access to all the home games.

If you are interested please call Leslie Way
519 306 0075 or 519 217 7995
jlcd@rogers.com • www.shelburneredwings.ca

Opening Game September 27th at 8:30pm
Come meet the new team!



Bahma

IS FOOT PAIN OR BACK PAIN KEEPING YOU FROM BEING ACTIVE?



Custom Made Bahma® Orthotic Supports
Custom Made Bahma® Shoes/Sandals



BIRKENSTOCK
PAPILLIO
FOOTPRINTS
FINNCOMFORT

Edward Felske, CCOFS MCOFS FOOT SPECIALIST
E.D.S. FORMING Orthotic Laboratories
Provider Inquiries edwardfelske@yahoo.com



Phone: (519) 942-1600 • Fax: (519) 942-1609
75 First Street • Orangeville, ON • L9W 2E7

www.bahmaeds.com

LEARN TO CURL!!!

Shelburne Curling Club

Please join us Friday, September 27th for our Wine & Cheese Reception & Registration 7pm-9pm
"We will be happy to answer any questions you may have."

FREE LEARN TO CURL CLINICS!

Wednesday, October 9th7pm – 8pm
Thursday, October 10th7pm – 8pm
Tuesday, October 15th7pm – 8pm
Thursday, October 17th7pm – 8pm

Clinics are taught by experienced members & qualified instructors.
New members receive a 25% discount!

Contact us at 519.925.2011
info@shelburnecurling.ca

Find us on: **facebook.**

CLASSIFIEDS

519.925.2832 • Fax: 519-925-5500 • email@shelburnefreepress.ca
Email, or call us for pricing. Classified cutoff time is Wednesday at 10 am

HELP WANTED

CAREER POSITIONS

IT Manager

- manage, plan, and direct IT for 5 manufacturing plants
- some CDN & US travel
- requires extensive knowledge of Manufacturing & SQL
- reports to clients, executive team, and internal staff
- some complex manufacturing issues

Millwrights, Plastic or Metal experience
Machine Operators...Saws, polishers, buffers,
\$14.00/ hr.

CNC / Water Jet Operators...All Shifts

AutoCAD Programmers

Heavy Construction - Estimator, Auditor

Packers - all shifts

Certified Forklift Operators

Lawn maintenance...exp. only

- Resumes only, no phone calls
- Only qualified persons will be contacted



HELP WANTED



TOWN OF SHELBURNE
SEASONAL WINTER EMPLOYMENT
PUBLIC WORKS DEPARTMENT
Competition #08-2013

The Town of Shelburne will receive resumes for two (2) seasonal labourer/operator positions. Duties will consist of operating various heavy equipment; single axle dump truck, rubber tire backhoe, front end loader and various other equipment for plowing snow and sanding/salting of roads, sidewalks and municipal properties. Duties will also include general equipment & shop cleaning & maintenance, and will also include manual labour consisting of snow removal for walkways and municipal buildings as required.

These positions will be in effect from December 2, 2013 to March 28, 2014.

These positions are 40 hours per week, 8 hours per day, plus overtime and shift work as required. These positions are at Grade 6, Step 1, at an hourly rate of \$22.53. Legislated benefits (vacation pay, stat holidays) will be in accordance with the Employment Standards Act. There is no benefit package associated with these positions.

Please clearly identify the following qualifications on your resume;

- Completion of Grade 12 or equivalent.
- Valid DZ driver's license.
- Experience with snow removal and/or heavy equipment operation.
- Experience operating single or tandem axle trucks, backhoe, loader, etc.
- Must provide your own CSA approved safety footwear.
- Submission of satisfactory Drivers' Abstract and police check.
- First Aid & CPR Training would be an asset.

The successful candidate will report to the Director of Public Works and the Public Works Foreman.

Resumes must be marked "Seasonal Winter Employment - Competition #08-2013", and may be dropped off at the Shelburne Municipal Office or emailed until 3:00 pm on Thursday October 10, 2013, addressed to:

Town of Shelburne
203 Main Street East, PO Box 69
Shelburne Ontario L0N 1S0
assistant@townofshelburne.on.ca

Questions and inquiries regarding these positions may be directed to:

Scott J. Wheeldon, C.E.T.
Director of Public Works
519-925-2600 Ext. 227
swheeldon@townofshelburne.on.ca

We thank all applicants for their interest, and advise that only those selected for an interview will be contacted.

FOR RENT

SHELBURNE AREA - 1 bedroom. Living room, Dining room, Kitchen, Bathroom. Well kept. \$770 per month plus utilities. No pets. 519 925 6060

STORE FRONT on Main Street, Shelburne. Good location, great visibility. Call Marg Mc carthy Sales Representative. Royal Le Page RCR Realty 519 216 1756

LUXURY SUITES for rent in Shelburne. Freshly renovated, features new fridge, microwave, stove, A/C, granite counter tops. \$850 per month. Call 519 925 0191

STORAGE FOR RENT in Shelburne (heated). Features include climate controlled heat, 24 hour security. 10' x 5' (50 Sq ft). From \$60 per month. Larger units available. Pay for 1x year and save 20%. Boxes plus moving supplies also available. Call 519 925 0191

AVAILABLE NOVEMBER 1ST. 2 bedroom apartment in Hornings Mills. 2 bathrooms with whirlpool tubs, dishwasher, washer & dryer, HD cable & parking. \$850 per month plus hydro. No dogs

REAL ESTATE

THINKING OF SELLING. I have buyers looking for homes in Shelburne and surrounding areas. Country Properties and Farms, Businesses and commercial. For successful buying and selling call Marg Mc carthy, Sales Representative, Royal Le Page RCR Realty 519 216 1756.

GARAGE SALE

MOVING GARAGE SALE - Sat, Sept. 28th, 10am - 5pm. Lots free, must go. Highway 10 at 260 sideroad. Rain or shine.

BIRTHDAYS

BETTY HENDRY - Come join us to celebrate the 95th birthday of Betty Hendry, Oct 6th 2-4pm in the New Horizons at Dufferin Oaks, Shelburne.



THANKS

IRWIN - I sincerely thank you, my family and friends for remembering me with phone calls, cards and visits, during my recent illness. These acts of kindness are greatly appreciated. - Pat

MCLELLAND - Thank you to family and friends for flowers, donations, food, cards, and phone calls received since mom's passing. Thank you to Reverend Ann Harbridge for her kind words and Audrey Oldfield for her special music. Special Thanks to the Take A Break Group for the delicious lunch. - Faye, Grant and Family

EVENTS

MONTICELLO UNITED CHURCH - Roast Beef Dinner, Monday October 7th, 4.30-7.30pm. Adults \$12.50. Children 6-12 \$5.00 Preschoolers Free. 401247 Dufferin Road 15 - 519 928 2028. Monticellounitedchurch.ca

BID EUCHRE - At Shelburne residence will be held every Wednesday afternoon beginning the new season on October 2nd 2013, at 1pm. The monthly bid Euchre's are held on the 2nd Friday of each month beginning October 1st at 7:00pm. Lunch prizes and refreshments. Admission \$2.00. Everyone who plays Bid Euchre or who wants to learn is welcome.

Shelburne, Monday Night Euchre Club at the Shelburne Residence, starts again on October 7th at 7pm. All welcome

TO ADVERTISE
IN OUR CLASSIFIEDS
CALL
519-925-2832

HELP WANTED

AUCTION SALE

For KEN PHILLIPS & KAREN WALLACE

Ph. 519-938-0143

EM# 237064 - 4th Line NE

Melancthon Twp. L9V 2J1

Directions: Come north of Shelburne on Dufferin Cty Rd #124 for 6 kms to Masonville (lights) turn west on Dufferin Cty. Rd #17 for 4 kms to the 5th line Melancthon OS, go north 2 kms to the 4th line NE turn left, 2nd place on left. (S.E. of Corbetton) GPS N44 08.849' W080 15.604'

SAT. SEPT 28th @ 10 am

Horses, harness Clydesdale 3 geldings broke to drive; Purebred Mare w/ papers; 3 full sets of nylon work harness; 7 collars various sizes; bells; strings; checks etc; saddle; Trailers Bison TA 5th wheel dble. horse trailer (gooseneck); People mover wagon; 9 ton triaxle float trailer; Tractors John Deere 60 row crop; Farmall H; McCormick W6; McCormick W4 w/snap tach ldr; A.C. WD 45; Thomas 700 gas skid steer; Int. 4 cyl. cub engine; JD 112 mower; Equip. McCormick thresh machine; JD Van Brunt drill; JD #5 sickle mower; 4 drag plows incl. MH 2F; one way disc; 6 older pull cultivators; dump rake; F.B. & JD pull disc; 2 Int. binders; cement mixer; Ant. Equip & horse drawn 2 potato diggers; M.H. #5A 1F riding plow; potato planter; 3 - 1F plows; ant. wheel barrow; ant. collectibles; steel wheels; lge. qty of binder canvass; Gas engines McCormick 3 hp hit & miss; (1) - 2 1/2 hp hit & miss; (1) 3-5 hp hit & miss; Snowmobiles 1979 Skidoo Blizzard 7500 plus; 1979 Kawasaki 340 Invader; Polaris Indy RXL & Polaris Colt SS 295 (as is); sled parts; mini puller chassie; Shop Equip Lincoln 180 & 170 T mig welders; Thunderbolt welder; older Lincoln welder; Ingersoll and T21 air compressor; steel lathe; tractor parts, draw bars, shop tools; drill press; torches NOTE: enough tools to service a full shop. Mr. Phillips has been in business for 20 yrs. Plus a lge. qty of household items; Possibly 2 Auctioneers selling. Washroom. Lunch booth. Visa, Interac, M.C.

Terms: Cash or cheque with proper ID only. Neither the Owners nor Auctioneer will be responsible for accidents or property loss.

Severn Auctioneering Inc.
Bob Severn Auctioneer-519-925-2091
www.auctionsfind.com/severn

AUCTION SALE

For the Estate of the late Ray Telford
Personal Collection of Allis Chalmers
Tractors and Forage Equipment
2964 Carlyon Line, Severn Township

Directions: From North; Take Hwy 11 south to Carlyon Line Exit. Take Carlyon Line to Division Rd, turn right onto Division Rd. then left back onto Carlyon Line. Sales is approx. 5.5 kms to 2964 Carlyon Line. From South; Take Hwy 11 North to Burnside Line Exit. Turn left onto Burnside line. Take Burnside line approx. 2 kms to Division Rd., turn right onto Division Rd. to Carlyon Line. Turn left onto Carlyon Line. Sale is approx. 5.5 kms to 2964 Carlyon Line. From West: Take Horseshoe Valley Rd to Prices Corners. Go straight onto Division Rd. to Carlyon Line. Turn left onto Carlyon Line. Sale is approx. 5.5 kms to 2964 Carlyon Line.

SATURDAY, OCTOBER 5th at 10 am

Allis Chalmers Tractors: WC c/w side mount mower S# WC 1349148; WD S#37123; CA 1953 c/w loader frame S# CA28029; C 1949, S#76635; WD45 1954 S# 178681; D14 S#31741; U S# 22192; B 1950, c/w hydraulics, S# 110075; G S# G14774; WF S# WF30; ED 40 diesel; B S# B749; D15 S# 19504; WC Patrol1945 S# 1E791; D Grader c/w cab S# 5977; 22 Massey Harris 1950 S#3748; 44 Massey Harris; Ford 9N Steel Wheeled Tractor. Plus A.C. equip, lawn & garden, etc. Pcs & full list on www.auctionsfind.com/severn.

Severn Auctioneering Inc.
Bob Severn Auctioneer
519-925-2091

Canadiana Antiques, Nostalgia, Antique Toys,
Advertising, Stoneware, Antique Tools,
Native Art, Clocks & Collectibles Auction
Sat., Sept 28 @9:30am - Creemore Legion Hall
Terms: Cash, Visa, MC, Debit, 10% BP
John B. Simpson Auctioneer
705-466-2207
Details @ www.simpsonauctions.com

OUR DOORS ARE OPEN...

Production positions available immediately!

Stop by our job fair where Adecco, in partnership with KTH Manufacturing, will be looking for dedicated and reliable individuals to work in a fast-paced manufacturing facility in Shelburne.

Date: Tuesday October 1, 2013
Location: KTH Shelburne | 300 Second Line, L9V 3N4
Time: 10 am - 2 pm

PLEASE BRING PHOTO ID AND SIN CARD

Candidates must be able to:

- work OT when required (including Saturday shifts)
- stand for 8-10 hours a day
- perform repetitive lifting/bending
- meet daily production quotas in a "just-in-time" environment

If you are interested in this opportunity but are unable to attend the job fair, please phone us at 519 942 9149.

We look forward to meeting you!



better work, better life

adecco.ca



TOOL AND DIE MAKER

Metal Systems of Canada ULC a division of Global Automotive Systems, located in Dundalk, Ontario, has an opening for a licensed Tool & Die Maker.

The successful applicant will be responsible for making, repairing and modifying custom made proto-type or special tools, dies, jigs and fixtures. The ability to use lathes, grinders, cut off saws, drill presses and hand tools is a must. Experience in a stamping facility is an asset. Afternoon shift is a requirement.

If you have proven leadership skills in a high pressure automotive environment we would like to hear from you. Please submit your resume stating your qualifications and expected wages by September 27 2013 to :

Human Resources
Metal Systems of Canada
PO Box 370, 280 Victoria Street
Dundalk, ON, N0C 1B0
Fax: 519 923 3245
e-mail: louise.clock@globalautosys.com

POULTRY PROCESSING LINE STAFF

10 positions available - DUNDALK POULTRY
Starting Nov/Dec 2013 - Minimum of 24 hours a week/year round

Duties include: Being a productive member of the processing line, responsible for a task that you will be trained for and cleaning after production.

New plant/long standing business looking for employees that can work in a team environment
Salary \$15.00 per hour

Please send your resume or information to :
Diane Giangrande,
Dundalk Poultry, 126815 Southgate Road, 12, ON N0C 1B0



Dufferin County Farms
FOR LEASE

5,500 tillable acres of
Class 1 farmland and
associated buildings.

Bonnefield is now
accepting lease proposals.

Deadline Oct. 11th, 2013

Please send email
Dufferinfarms@bonnefield.com
to receive an information pack

FIREWOOD

FIREWOOD, dry season maple, cut and split 2011. 15 inch lengths \$340 per full cord. Free delivery, volume discounts. Also available 12" lengths. Complete wood lot Management - 519 986 24620

PETS

FREE RESCUED KITTENS - Kittens dewormed, treated for fleas. We will spay/neuter kittens for \$60.00 at 4 months old. Call Feral Cat Rescue - Sharon - 519-278-0707

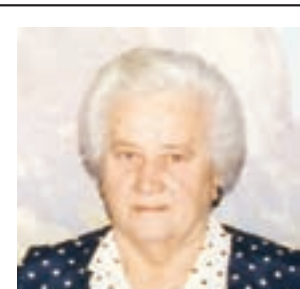
STORAGE

MARY'S STORAGE - for Trucks, Cars, Trailers, boats and RV's. Call after 5pm - 519 923 6242

AUCTIONS

Kevin Scott
McArthur - Bessey Auctions
 Farm, Livestock,
 Estate, Home & Business
Auctions with experience & consideration
Kevin (519)942-0264 • Scott (519)843-5083
www.theauctionadvertiser.com/KMcArthur

DEATHS



Juliana Kutschenreiter
 Passed away in William Osler Hospital, Brampton On Friday, Sept. 20, 2013 In her 83rd year

Juliana (Ament) beloved wife of the late Karl Kutschenreiter Sr. Dear mother of Wilma (Ron) Goheen of RR 2 Proton Station. Loving Grandmother of Greg (Leila) Goheen of Alberta, Tim (Jocelyn) Goheen of Michigan, Shan and Tanya Kutschenreiter. Survived by 2 sisters Francis and Vera. Will be sadly missed by 5 grandchildren. Predeceased by a son Karl Jr., and a grandson Kyle and 3 brothers and 4 sisters.

THE FUNERAL
 Rested at the McMillan & Jack Funeral Home, Dundalk. Visitation was held at the Funeral Home on Sunday, September 22, 2013 from 2-4pm and Monday September 23, 2013 from 2-4pm. Funeral mass was held in St. John's Roman Catholic Church, Dundalk, Ontario on Monday, September 23, 2013 at 10am. Interment was at Mt. Zion Cemetery.

DEATHS



Entered into Rest
 Suddenly as the result of an accident at Bracebridge On Wednesday, Sept. 18, 2013

Ron Aldom, husband of Janice (VanAlstine) Aldom, and loving father of Taylor and Dylan. Survived by his father Alex Aldom (Helen), Donna, Margo Newell (Slim), Maurice (Deb), Randi, Ryan, (Sam), Carlene (Kyle) Carson, Landon, Holden and Donna. Son in law of Vic (Anne) VanAlstine, Darlene (Steve), Caleigh, Kristy, Dave (Blue), Natasha, Dani, Rob, Victoria, and Hayden. Predeceased by his mother Marion and brother in law (Newt) Newell.

THE FUNERAL
 Rested at the McMillan & Jack Funeral Home, Dundalk. Visitation was held at the Funeral Home on Sunday, September 22, 2013 from 2-4pm and 7-9pm and on Monday September 23, 2013 from 2-4pm and 7-9pm. Funeral service was held in the Honeywood Arena on Tuesday, September 24, 2013 at 2pm. Interment in Badjeros Cemetery. Donations to the Honeywood Fire Department or the Dundalk Fire Department would be appreciated.

DEATHS



Late Ross Peterson

It is with great sadness that we announce that we have lost our beloved husband, father, son, brother and grandfather, Ross M. Peterson, 76, of Bergland, Ont on Friday September 20, 2013 at his family home.

Ross was born in Rainy River, Ont on October 27, 1936, to Arthur and Gerda Peterson.

He was raised in Bergland and worked at different jobs in the Lake of Woods area for several years, including the family business at Peterson's Stop & Shop, and guiding and logging in the community. Ross later began working for Arctic Cat in Rainy River, which relocated his family over the years to Sault Ste. Marie, Peterborough, Shelburne, and finally Winnipeg, Manitoba.

In 2002 Ross retired as the President for Lund Boats of Canada and returned to Bergland. He enjoyed the outdoors spending time boating and fishing, watching and playing hockey and baseball, and travelling as much as possible. He was a member of the Shelburne Lions Club, Bergland Trinity Lutheran Church and he was very active in the Bergland area community.

Ross had a positive outlook on life, which gave him the strength to overcome his failing health. He lived life to the fullest and will be remembered for his warm personality and humour.

He will be greatly missed and lovingly remembered by his wife Carol (nee Dalseg), mother Gerda, his children Mary (Rick), Patti, Krista (Josh), Heather (Craig), stepchildren David and Dawn, grandchildren Haley, Sydney, Tyler, Jordyn, Alex, Andrew, Carson, Joel, Caitlyn, his brother Duane, and numerous nieces, nephews and extended family.

Ross was predeceased by his wife Verene (1996) (nee Hamilton), his father Arthur and sister-in-law Ella Peterson.

A memorial service will be held on Thursday September 26, 2013, 11 a.m. at the Bergland Community Hall, Bergland, Ont with Lay Pastor Carolyn Kreger officiating. Interment will take place in Bergland Cemetery.

Honourary Pall Bearers will be Leonard Larson, Bobby Tofte, George Pratt, Donny Boyd, Brent Sands, John Malloy and Dean Allen.

In lieu of flowers, memorial donations may be made to the Rainy River Health Centre, c/o Northridge Funeral Home, Box 89, Emo, Ontario, P0W 1E0.

Online condolences may be made at www.northridgefuneralhome.com

OFFICE SPACE

SHARED OFFICE SPACE AVAILABLE IMMEDIATELY
 Utilities included, privacy, newly renovated.
 2x offices available \$300 per month all inclusive. (except phone line)
 Shelburne in prime location on Main Street.
 Call Karin Rossi for details 416 518 0648

DEATHS

Gray, Gerald Edwin

Passed away peacefully on September 17, 2013 at Dufferin Oaks LTC in Shelburne. Pre-deceased by his parents Laura and Russell Gray, sister June, brothers Jack and Aubrey. Beloved brother of Oaklah (Lynda), Ronald (Joan) and Margaret (the late Harold Henderson) Gerald will be fondly remembered by his nieces, nephews and friends. The Gray family would like to thank the staff at the Dufferin Oaks LTC for their compassion and the care they provided for Gerald. Cremation has taken place. Interment at Shelburne Cemetery on Friday September 27, 2013.

Arrangements entrusted to the Drury Funeral Centre Ltd.
www.druryfuneralcentre.com

CANCELLATION

The Tipling Stage Company regrets that, due to unforeseen circumstances, it must cancel its production of John Spurway's Grounded scheduled for October 4th to 12th. Ticket holders may request a refund by calling 519 925 3146 or substitute their tickets for admission to Dick Whittington (and his cat) January 24th to February 2nd

Looby, Elizabeth Jean (NEE Wallace - Normac Chapter 311)
 April 3 1924 - September 23, 2013

Peacefully at Headwaters Health Care Centre, Orangeville in her 90th year. Loving wife of the late Earl. Cherished mother of Barry and his wife Tara, Marian and her husband Wayne Gallagher, Dale and his wife Bonnie, Valerie and her husband Sergio Staniak, Barbara and her friend Paul Richards, Carolyn and her husband Arthur Rubin and Rosemary and her husband Steve Graham. Loving grandmother of 15 grandchildren and 10 great grandchildren. Predeceased by her son Bruce, dear sister of Jim Wallace and the late Maurice Wallace.

The family will receive friends at the Jack & Thompson Funeral Home, Shelburne, on Thursday from 2-4pm and 7-9PM. Funeral service in the funeral home chapel on Friday, September 27, 2013 at 1.00pm. Interment at the Shelburne Cemetery.

MEMORIAM

George Winchester
 September 28, 2010

The memory is as strong today, Of the afternoon you went away,

It hurt a lot to say goodbye, No matter what the reasons why. We miss you, but we carry on the way you taught us to, Sharing laughter and happy thoughts in everything we do.

Your Family

SHELBURNE SERVICE DIRECTORY

Husqvarna
McCarthy & Sons
 Full Service Dealer
 782111 Country Rd. #9 Dundalk
519-923-6753

REPAIRS & SERVICE ON ALL MAKES AND MODELS

Lumber Plywood
 Trusses Windows
 Roofing Siding
 Fence Supplies Culverts
 Cedar Posts Railway Ties
 Fuel Delivery Oil Furnaces
 Lawn & Garden Supplies
 "No where...but close to everywhere"

HAMILTON BROS.
 Building and Farm Supplies Ltd.
 2047 Glen Huron Rd.,
 Glen Huron, Ont. L0M 1L0
 Ph: 705-466-2244,
 or 705-445-1166
 Fax: 705-466-2122
 E-mail: hamilton@ultrafastwireless.com

DOMINION LENDING CENTRES
AC MORTGAGE SERVICES LTD. Lic# 11890
 211 MAIN ST. E., SHELBURNE ON, L0N 1S0
 INDEPENDENTLY OWNED AND OPERATED
Carol Freeman 519-925-6700 X102
 Mortgage Broker CELL: 519-938-6518
 FAX: 519-925-6800
ben_calnett@yahoo.ca
WWW.CAROLFREEMAN.CA

Hepburn Trailer Sales
Service and Repairs
Hwy 9 Schomberg 905-939-2279

SHELBURNE COMPUTERS
Erin Steadman
 524 Main Street East
 Shelburne, Ontario L0N 1S2
Phone: 519-925-3107
 Fax: 519-925-6590
 Email: erin@shelburnecomputers.com
www.shelburnecomputers.com

DELMAR ELECTRIC
 INDUSTRIAL | COMMERCIAL | RESIDENTIAL
 HOME AUTOMATION | GENERAC GENERATORS
 1.800.231.9228 | 519.925.4037
www.delmarelectric.ca

FREEMAN Construction & ALUMINUM
 • SIDING (ALUMINUM OR VINYL)
 • WINDOWS & DOORS
 • STEEL DOORS • SEAMLESS EAVESTROUGH
 • RECOGNIZED DEALER OF ALUMINUM/VINYL PRODUCTS
CALL TONY 519-925-9592 705-434-8414

Clayton Plumbing
 • New Installations • Renovations • Water Softeners
 • UV Systems • Iron Filters • Reverse Osmosis
 • Pressure Systems • Pump Sales & Service
519-925-5147
www.claytonplumbing.ca
 Serving Shelburne and Area For Over 30 Years

G+D OVERHEAD DOORS
 SERVICE AND INSTALLATION FOR
 RESIDENTIAL, COMMERCIAL, AGRICULTURAL & INDUSTRIAL
 OVERHEAD DOORS & ELECTRICAL OPENERS
R.R. #1 PROTON STATION, ON N0C 1L0
CALL GREG FERRIER AT (519) 375-2822 OR (519) 923-6462

MANAX
 PLUMBING • PUMP SERVICE • EATER TREATMENT
EXCELLENT RATES SAME DAY EMGS RESPONSE
 Call **ALEX**
TOLL FREE: 1 (888) 349-7971
www.purewatercanada.com • manaxplumbing@gmail.com

Alex R. Wilson
 SURVEYING INC.
 Ontario Land Surveyors
LEGAL AND TOPOGRAPHICAL SURVEYS
 120 King St. E., Mount Forest
519-323-2451 • 1-800-367-5042

Paul Downey ELECTRIC
 ECRESA License Number 7007435
 Residential Commercial Industrial Farm Solar
 519-925-5570 Home
 519-938-2267 Cell
 596519 2nd Line West RR2
 Shelburne, ON L0N 1S8
pauldowneyelectric@hotmail.com

Richard Rayment
 ELECTRICAL CONTRACTOR
 Residential, Commercial & Farm
 245635 Southgate Road 24
 Proton Station, ON N0C 1L0
519-923-6041 Cell: 647-832-5781

Stewart Construction
 All Stewart: (519) 216-1972 Bill Broderick: (519) 939-0379
 BASEMENTS DRIVEWAYS TRENCHING SEPTIC SYSTEMS WATER/SEWER INSTALLATION & REPAIR
 SITE PREPARATION PONDS LANDSCAPING DEMOLITION
Call for a FREE quote.

Free Estimates 10% Seniors Discount
STUMP BUSTERS
 TREE AND STUMP SERVICES
 Tree Removal • Pruning
 Deadwooding
 Deep Root Fertilizing
 Bucket Truck Service
 Chipper Service • Stump Removal
 Fully Insured • 24 Hour Service
519.940.3680
www.stumpbusterscaledon.com

BILLY BOY
 PAINTING STAINING WATER SEALING
 INTERIOR • EXTERIOR • FENCES • DECKS & MORE!
519-216-7795
 Commercial Residential
William Campbell

STANDT "Where Quality and Service is Our Priority"
 SHELBURNE TIRE AND TOWING INC.

Call Dave for best tire prices in town!
 525401 5th Sideroad, Melancthon, RR #4 Shelburne, ON L0N 1S8
519-925-5002 • 519-925-2795
 Email: shelburnetire@hotmail.com

TO ADVERTISE HERE CALL
519-925-2832 OR
email@shelburnepress.ca

CHRISTADELPHIANS
THOUGHT OF THE WEEK

#215330
10TH LINE
AMARANTH
JUST NORTH
OF 25TH
SIDEROAD,
WEST SIDE

To know God's will is life's greatest treasure;
to do God's will is life's greatest pleasure.
- Anonymous

Search for wisdom as you would search
for silver or hidden treasure.
Then you will understand what it means to
respectfully fear and to know the LORD God.
Proverbs 2:4-5

Please visit us at: www.shelburnechristadelphians.ca

SHELBURNE CHURCH DIRECTORY

ABIDING PLACE FELLOWSHIP
A Church with a difference, making a difference
Auditorium, Dufferin Oaks, Shelburne
"C" Door off Centre Street
Sunday Service - 10 a.m. & Children's Church
Bible Study & Prayer - Wed., 7p.m. @ Pastor's Home
Pastor Gord Horsey (519) 925-3651
COME AND BE BLESSED. ALL ARE WELCOME!

BETHEL BIBLE CHAPEL
419 Main Street East, Shelburne
Sunday Services - 9:30am Lord's Supper
10:45am Family Bible Hour, Sunday School
Chapel 519-925-3910 or 519-925-0541
www.bethelshelburne.com - All Welcome!!

Cross Roads Community Church
"The Light Shines In The Darkness"
Meetings: Sunday Mornings at 10:00 a.m.
The Shelburne Library
(Corner of Owen Sound St. and First Ave.)
Children's Church
Pastor: DON HUIME
519-939-1453
www.shelburnecrossroadschurch.ca
"The Light Shines In The Darkness"
(John 1:5)

ROMAN CATHOLIC
ST. JOHN'S CHURCH
923-2042
MASSES:
Saturday, Dundalk, 5 p.m.
Sunday, Melancthon, 9:30 a.m.
(North on Hwy. #10 to 280 Sideroad, Melancthon)
Proton 11:15 Sunday

Grace Church of the Nazarene
736 Steeles Street, Unit 3, Shelburne
10:00 a.m. - Sunday Morning Worship
- Sunday Training for Children
Pastors: Bob & Maxine McLellan
Ph: 519-925-0560 • www.ShelburneGrace.com
Come Learn Biblical Universal Principles & Truths
"They" do not want you to know about.

TRINITY UNITED CHURCH
11 am Service, Nursery, Sunday School & Teen
Group Music, Social events & Outreach
200 Owen Sound St., Shelburne 925-2233
Rev. David Howes
trinityunitedchurch@bellnet.ca

ST PAUL'S ANGLICAN CHURCH
312 Owen Sound St., Shelburne - 925-2251
office@stpauls-shelburne.ca
Sunday Service and Children's Ministry - 9:30 a.m.
Priest: The Rev. Stephanie Pellow

Bethel Kids' Club
Wednesday Nights 6:30 - 7:30 p.m.
Register On: October 2nd, 2013
Bethel Bible Chapel - 419 Main St E
FALL Term: Oct. 2nd - Nov. 22nd
FREE for Boys & Girls! Ages 5 - 12

Music & Singing!
Exciting Bible Stories!
Arts & Crafts!
Team Games!
Contests: Save Points - Earn Prizes!
Fun with Memory Verses!

Picture Yourself in Shelburne
www.visitshelburne.ca

DUFFERIN COUNTY MUSEUM AND ARCHIVES

YOUR FACE HERE

ENTER TO WIN a \$500 Prize

NEWS FROM THE CHURCHES

Crossroads Community Church hosts fall 'Kick-off' session



Special Worship was led by our good friend Wesley Vardy of Dundalk Wesleyan Church.

The atmosphere was buzzing with anticipation as we gathered to enjoy in the Lord's presence. The festive morning began with a Puppet show appreciated by everyone with a message that the Lord is reliable and trustworthy, He never lies and that we should pray for those who do not know Him. Joyful songs were shared by Bob, Brian, Barb and Shayna followed by our good friend Wesley. Psalm 96:1 and Luke 9:57 were read. Pastor Don anointed the service with prayer.

Pastor Don gave a heartfelt message from the Lord, he asked, "Why come to Church, what is it good for?" Statistics say that of those who profess to be Christians, only 20% actually attend church regularly. Let me tell you a little

story, there was a man who loved God, and prayed but had stopped attending church for some time. One day the minister decided to go visit him. As the man answered his door and the minister entered he went to sit on a big comfy chair near the fire. After a long moment of silence, the minister took a pick and removed one of the pieces of wood from the fire and set it on the stone before it. The man watched quietly as they glanced back and forth at each other. The piece of wood quickly cooled down and no glimmer emitted from it. Not a word was spoken, the minister stood up and made his way to the door, the man looked at him and said, "thank you for the encouraging sermon, I'll see you at church next Sunday," The minister smiled

and tipped his hat and walked away.

As believers when we give up on meeting with each other we are like a log removed from a fire, our light goes out, when we go about our daily routines and avoid gathering together, we grow cold and weary, (Hebrews 10:25). When we come together, we encourage one another; we share in each other's burdens as much as each other's joys. When we neglect our relationship with each other it saddens our Heavenly Father. He formed the church so when we take part of it we are in His will and consequently part of His family, (Mark 3:31-34) This is for anyone who wholeheartedly comes to the Father.

We are one family through Jesus Christ. "So now you Gentiles are no longer strangers and foreigners. You are citizens along with all of God's holy people. You are members of God's family." - Ephesians 2:19-21. As a church family we are all accountable to each other. A Pastor's responsibility is to teach and feed the word of God, our responsibility is to listen and put it into practice, (James 3:1). We as a whole have a responsibility to encourage, to serve, to grow and to pray together and for one another sharing in His knowledge, (2Peter 1:2).

So what is it that makes us

able to rely on God and each other? It is His Love and His promises, he is reliable and He does what He says, His word is truth, (Hebrews 6:18). None of us deserve it but He freely gives us His love which saves and forgives we just need to reach out for it, (Romans 3:23). Church is a family of people because of Jesus' loving sacrifice; it bonds us together, so when we meet together on Sunday mornings, prayer meetings or Bible studies we are representing the love of God within a family. This will shine to a world who longs to belong, many people are lonely and need to be loved and they are watching, so let us point them to their Heavenly Father, (2 Corinthians 3:2-3). Becoming part of God's family is about relationship with Him and each other where we are loved unconditionally, we are sheltered, we are forgiven, encouraged and are understood and we are no longer alone. So again, "why come to church, what is it good for?" Absolutely everything!

Beloved brothers and sisters, when we join together to enjoy God's presence, we are refreshed and energized; we can therefore face the days ahead and shine God's love for all to see and inviting them to join the family. Asherey Shalom!
www.shelburnecrossroadschurch.ca/

Shelburne Library carries prize-winning books

The Giller Prize 2013 Booklist was announced last week and we have almost all of the books here in the library. Sometimes they are a little different from what you might ordinarily read but this year's selections are quite interesting. It will be fun to read them and see which ones are short-listed on October 8th. The winner will be announced on November 5th in Toronto.

The list comprises:
The Orenda - Joseph Boyden
Going home again - Dennis Boch
Hellgoing-Lynn Coady
Cataract City - Craig Davidson
How to get Along with Women- Elisabeth De Mariaffi
Extraordinary- David Gilmour
Emancipation Day- Wayne Grady
October 1970 - Louis Hamelin

The Son of a Certain Woman- Wayne Johnston
The Woman Upstairs - Claire Messud
Caught- Lisa Moore
The Crooked Maid - Dan Vyleta
Minister without Portfolio - Michael Winter
The last few days have been a whirlwind of activity for me and the library... all of it wonderful!
For the past eight years, I have been part of a panel of judges for the Arts & Entertainment Essay contest for students. The contest requires students from Grades 5 to 12 to write an essay titled "Canadian Lives that Made a Difference". It is a National contest with students from coast to coast submitting their work. The prizes are substantial and are presented to both the students and the school. As part of the team, this year I was invited to attend the Nation-

al Art Centre Gala in Ottawa to join the A & E table. I met quite a number of politicians, MPs, Senators, and other dignitaries. And, the feature artist of the evening was Paul Anka. What an amazing performer who gave a dynamic performance for the "hometown" crowd. It was a wonderful evening with many opportunities to talk to people about Shelburne and our Library.

That was heady stuff and then last night, we were thrilled to attend the Shelburne Council meeting to receive the Excellence in Accessibility Award from the Town of Shelburne Accessibility Advisory Committee. It is a real honour for us to receive this beautiful award for the work we are doing to provide a large collection of Daisy format talking books for patrons with print disabilities. This is the result of our partnership with the CNIB. Cathy Earle, our volunteer who selects and delivers books to Dufferin Oaks and Shelburne Residence joined me to accept the Award. Along with the Council members, Library Board Chair Geoff Dunlop and the members of the Accessibility Advisory Committee joined in the evening's presentation. Significant to this program are the number of individuals and organizations who have played a role in partnering with the library and providing the resources to help make this program happen.

Library Literary Event, Sunday September 29th: Just a quick reminder to join us for

Barbara Kyle's presentation and author talk this Sunday at 2 p.m. We look forward to a very interesting discussion and a social time afterwards. Please call and register for the event. It is a free event but registration is important to us for planning.

Book Clubs: Our adult Book Club, Rose's Thursday Book Club at 2 p.m. and our teen Book Club, Pizza & Pages at 6 p.m. meet this Thursday. See you there!

Children's programs: Storytime is on Fridays at 10:30 and we will be starting our Toddler Time on Tuesday, October 8th. Please let us know if you are coming.

Our new books along with the new books in Giller Long List include the following:

Fiction:
Let me go by Chelsea Cain
Omens by Kelley Armstrong
Tell no lies by Greg Hurwitz
A fatal likeness by Lynn Shepherd
A dying fall by Elly Griffiths
The good lord bird by James McBride
Blood between queens by Barbara Kyle
The bone season by Samantha Shannon
Lookaway, lookaway by Wilton Barnhardt
Holy orders by Benjamin Black
The White Princess by Philippa Gregory
Hearts of Sand by Jane Haddam

See photo highlights on PAGE 8

Main Street COIN LAUNDRY
eco laundry

NOW OPEN, IN SHELBURNE!

NEW FACILITY, WITH HIGH EFFICIENCY MAYTAG EQUIPMENT.

At rear of 147 Main Street West, beside municipal Parking lot.

Here to serve you 519 306 0191
Hours 8am - 10pm 7 days a week

CALLING ALL KIDS!

The Shelburne Free Press is currently seeking newspaper carriers to deliver once a week.

• Shelburne Town Routes

Interested in becoming a newspaper carrier in Grand Valley? We are currently seeking carriers to deliver newspapers once a week door to door.

Call Debbie 519-925-2832 / 519-216-1021

PICCADILLY PARTY

HAVING THE FAMILY FOR THANKSGIVING DINNER? LET PICCADILLY PARTY DO THE DISHES!

RENT A DOZEN PLACE SETTINGS OF CHINA & FLATWARE FOR UNDER \$40
... DAMAGE WAIVER & TAXES EXTRA ...

137 MAIN ST. WEST, SHELBURNE
519.925.2404
WWW.PICCADILLYPARTY.CA